

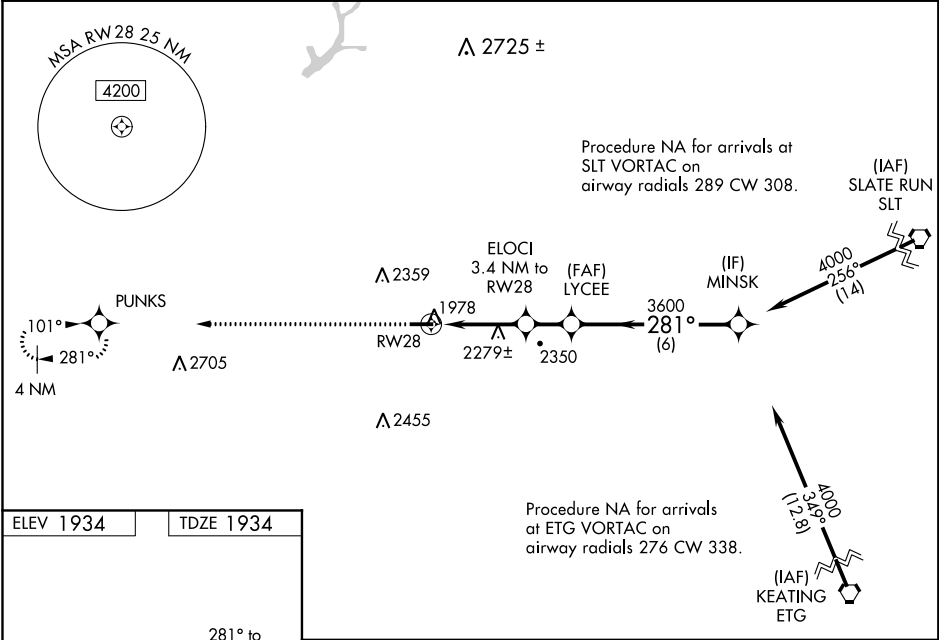
WAAS CH 82302 W28A	APP CRS 281°	Rwy Idg TDZE Apt Elev	4300 1934 1934
--	------------------------	-----------------------------	---

RNAV (GPS) RWY 28

ST MARYS MUNI (OYM)

RNP APCH.	<div>MALS</div> <div></div>	MISSED APPROACH: Climb to 4000 direct PUNKS and hold.
<div><div>▼</div><div>▲ NA</div></div> <div>Rwy 28 helicopter visibility reduction below 3/4 SM NA. Inop table does not apply to LPV all cats and LNAV Cat A/B. VDP NA when using Bradford altimeter setting. When local altimeter setting not received, use Bradford altimeter setting and increase all DA/MDA 240 feet, LPV all cats visibility 3/8 SM, LNAV Cat C/D 3/4 SM, and Circling Cat A/D 1/4 SM and Cat B 1/2 SM and Cat C 1 SM. When using Bradford altimeter setting, inop table does not apply to LNAV Cat C/D. For inop ALS when using Bradford altimeter setting, increase LPV all Cats visibility to 1 1/4 SM and LNAV Cat A/B to 1 1/2 SM.</div>		

AWOS-3P 118.05	CLEVELAND CENTER 126.725 291.65	ALTOONA CLNC DEL 122.4	UNICOM 122.7 (CTAF) 0
--------------------------	---	----------------------------------	---------------------------------



ELEV 1934	TDZE 1934
-----------	-----------

