

MEADVILLE, PENNSYLVANIA

19059

LOC I-GKJ
108.5

APP CRS
249°

Rwy Idg	5001
TDZE	1399
Apt Elev	1399

LOC RWY 25
PORT MEADVILLE (GKJ)

RADAR required.

T Inop table does not apply.

A Rwy 25 helicopter visibility reduction below $\frac{3}{4}$ SM NA.

MALS



MISSED APPROACH: Climb to 2000 then climbing left turn to 3600 on heading 125° and FKL VOR R-300 to FKL VOR and hold.

ASQS

121.425

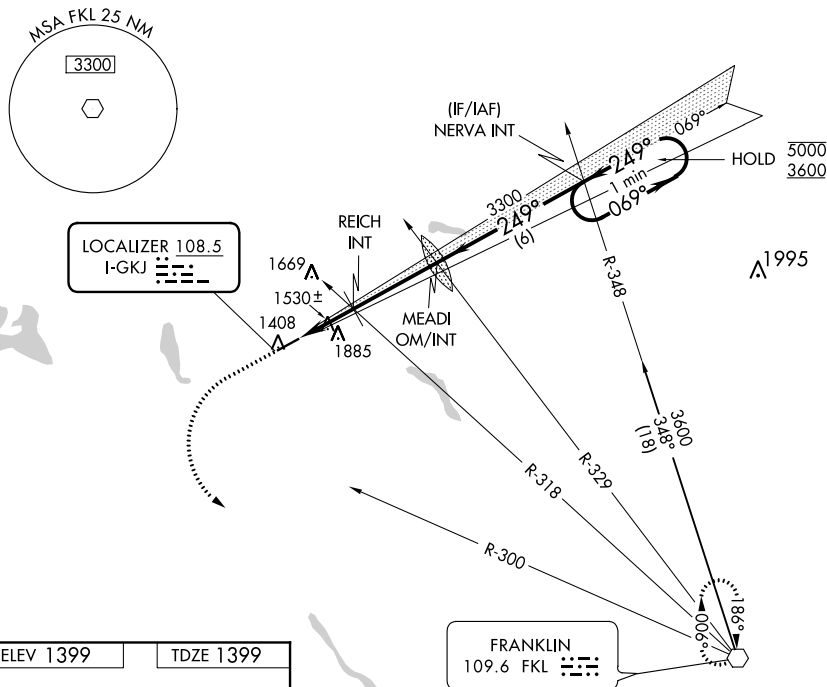
YOUNGSTOWN APP CON★

133.95 322.3

CINC DEI

124.95

UNICOM

123.0 (CTAF) **L**

ELEV 1399

TDZE 1399

249° 5.7 NM
from FAF

1465

1584 

MIRL Rwy 7-25 **L**

FAF to MAP 5.7 NM

Knots	60	90	120	150	180
Min:Sec	5:42	3:48	2:51	2:17	1:54

Figure 1: Example of a typical flight profile. The graph shows altitude (ft) on the y-axis (0 to 5000) and time on the x-axis (0 to 6 minutes). The profile starts at 2000 ft, descends to 2140 ft (REICH INT), then ascends to 3300 ft (MEADI OM/INT), and finally levels off at 5000 ft (One Minute Holding Pattern). Key parameters include: 3600 ft hdg 125°, FKL R-300, FKL (hexagon symbol), REICH INT, MEADI OM/INT, NERVA INT, and a 249° climb angle. A 3.09° TCH 41 is also indicated.

CATEGORY	A	B	C	D
S-LOC 25	1780-1	381 (400-1)	1780-1 $\frac{7}{8}$	381 (400-1 $\frac{7}{8}$)
CIRCLING	1900-1 501 (600-1)	2240-1 $\frac{1}{4}$ 841 (900-1 $\frac{1}{4}$)	2240-2 $\frac{1}{2}$ 841 (900-2 $\frac{1}{2}$)	2240-2 $\frac{3}{4}$ 841 (900-2 $\frac{3}{4}$)

MEADVILLE, PENNSYLVANIA

Amdt 6E 19JUL18

41°38'N-80°13'W

PORT MEADVILLE (GK.I)

LOC RWY 25

NE-4, 03 DEC 2020 to 31 DEC 2020