

WAAS CH 99441 W22A	APP CRS 223°	Rwy Idg TDZE Apt Elev	7003 2302 2302
--	------------------------	-----------------------------	---

RNAV (GPS) RWY 22

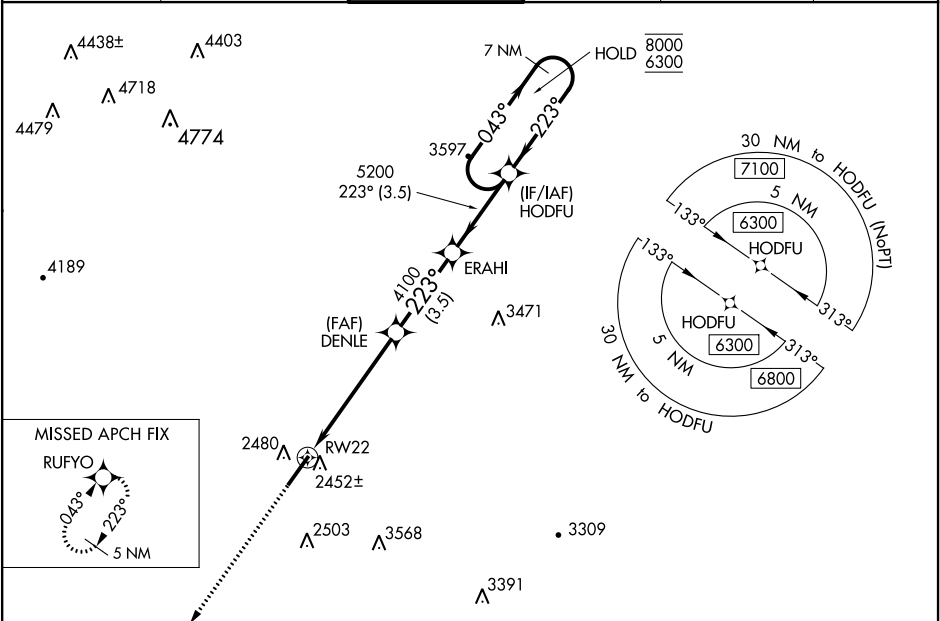
GREENBRIER VALLEY (LWB)

RNP APCH.

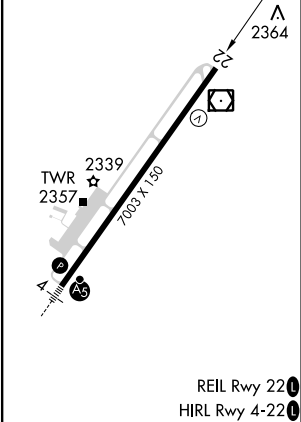
Rwy 22 helicopter visibility reduction below ¾ SM NA.
For uncompensated Baro-VNAV systems, LNAV/VNAV
NA below -19°C or above 52°C.

MISSED APPROACH: Climb to 5000 direct RUFYO and hold.

ATIS ★ 121.4	WASHINGTON CENTER 134.4 353.9	LEWISBURG TOWER ★ 118.9 (CTAF) 0	GND CON 121.9	CLNC DEL 120.85 (When twr closed)	UNICOM 122.95
------------------------	---	--	-------------------------	--	-------------------------



ELEV 2302	D	TDZE 2302
-----------	----------	-----------



5000

RUFYO

*LNAV only.

DENLE

ERAHI

HODFU

7 NM Holding Pattern

8000

6300

GP 3.00°
TCH 58

1.2 NM

4.3 NM

3.5 NM

3.5 NM

CATEGORY	A	B	C	D
LPV DA		2614-7/8	312 (400-7/8)	
LNAV/VNAV DA		2723-1¼	421 (500-1¼)	
LNAV MDA	2720-1	418 (500-1)	2720-1½	418 (500-1½)
CIRCLING	2840-1 538 (600-1)	3040-1 738 (800-1)	3280-3 978 (1000-3)	3580-3 1278 (1300-3)