

APP CRS
076°

Rwy Idg
4002

TDZE
1228

Apt Elev
1228

RNAV (GPS) RWY 8

ROSTRAVER (FWQ)

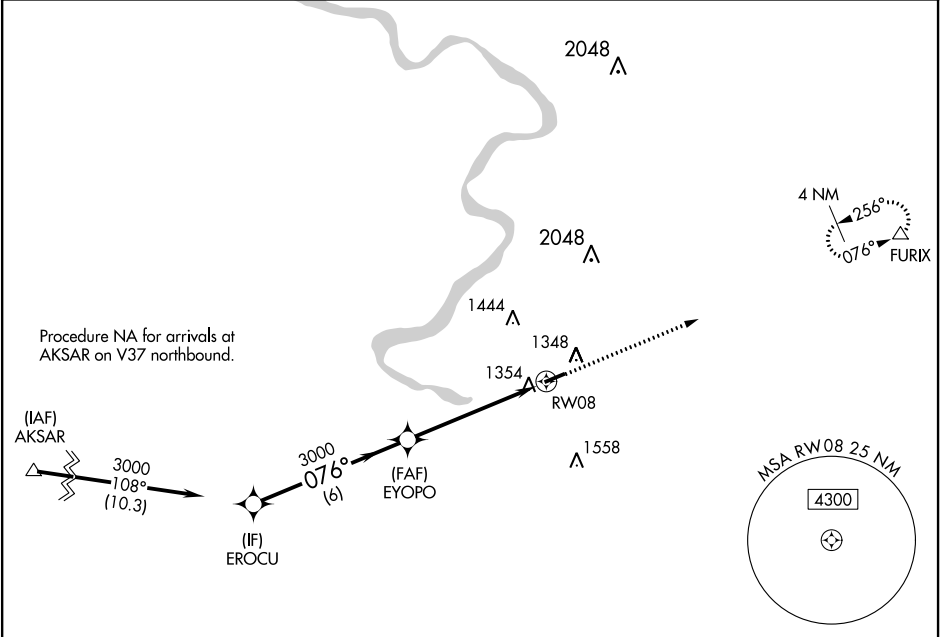
▼

NA

When VGSi inop, Straight-in/Circling Rwy 8 procedure NA at night. DME/DME RNP-0.3 NA. When local altimeter setting not received, use Allegheny County altimeter setting and increase all MDA 40 feet; increase LNAV Cats C/D visibility 1/8 mile. Rwy 8 helicopter visibility reduction below 1 SM NA. Rwy 26 helicopter visibility reduction below 3/4 SM NA.

MISSED APPROACH:
Climb to 3700 direct
FURIX and hold.

AWOS-3 118.475	PITTSBURGH APP CON 119.35 337.4	UNICOM 122.8 (CTAF) 0
-------------------	------------------------------------	--------------------------



					ELEV 1228	TDZE 1228																										
<div><div><div><div>EROCU</div><div>EYOPO</div><div>RW08</div></div><div><div>3000</div><div>3000</div><div>3.00° TCH 51</div></div><div><div>6 NM</div><div>5.4 NM</div></div></div><div><div>3700</div><div>FURIX</div></div></div> <tr><td>CATEGORY</td><td>A</td><td>B</td><td>C</td><td>D</td><td colspan="2"></td></tr> <tr><td>LNAV MDA</td><td colspan="2">1720-1 492 (500-1)</td><td colspan="2">1720-1$\frac{3}{8}$ 492 (500-1$\frac{3}{8}$)</td><td colspan="2"></td></tr> <tr><td>CIRCLING</td><td colspan="2">1720-1 492 (500-1)</td><td>1720-1$\frac{1}{2}$ 492 (500-1$\frac{1}{2}$)</td><td>1780-2 552 (600-2)</td><td colspan="2"></td></tr> <tr><td colspan="5"></td><td colspan="2">MIRL Rwy 8-26 ① REIL Rwy 8 and 26 ①</td></tr>					CATEGORY	A	B	C	D			LNAV MDA	1720-1 492 (500-1)		1720-1 $\frac{3}{8}$ 492 (500-1 $\frac{3}{8}$)				CIRCLING	1720-1 492 (500-1)		1720-1 $\frac{1}{2}$ 492 (500-1 $\frac{1}{2}$)	1780-2 552 (600-2)								MIRL Rwy 8-26 ① REIL Rwy 8 and 26 ①	
CATEGORY	A	B	C	D																												
LNAV MDA	1720-1 492 (500-1)		1720-1 $\frac{3}{8}$ 492 (500-1 $\frac{3}{8}$)																													
CIRCLING	1720-1 492 (500-1)		1720-1 $\frac{1}{2}$ 492 (500-1 $\frac{1}{2}$)	1780-2 552 (600-2)																												
					MIRL Rwy 8-26 ① REIL Rwy 8 and 26 ①																											