

WAAS	APP CRS	Rwy Idg	3995
CH 78005	049°	TDZE	1027
W05A		Apt Elev	1070

RNAV (GPS) RWY 5

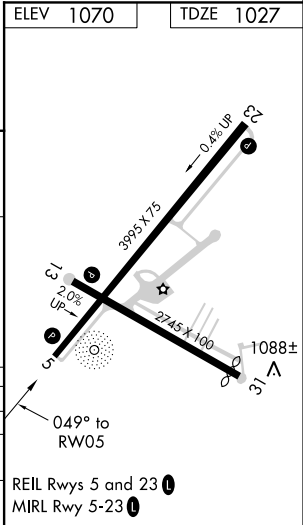
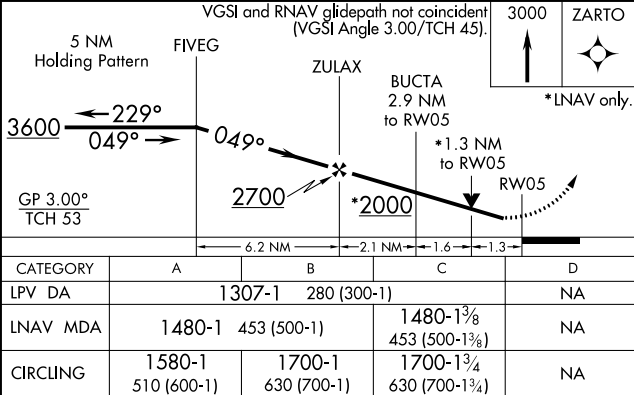
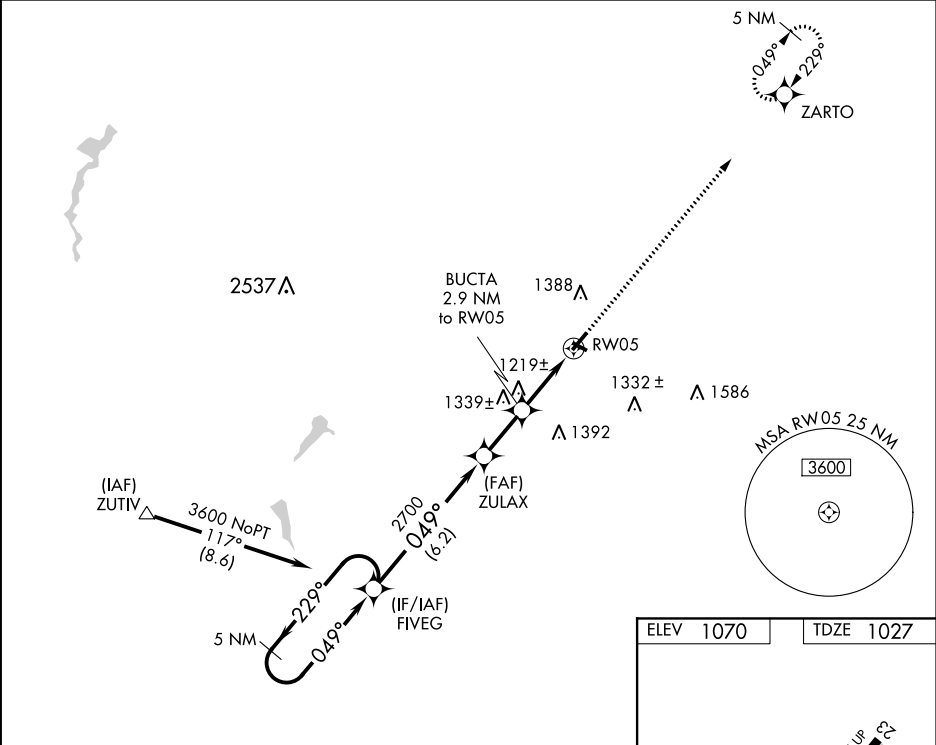
NEW CASTLE MUNI (UCP)

RNP APCH.

▼ VDP NA when using Youngstown-Warren Rgnl altimeter setting. Rwy 5 helicopter visibility reduction below ¾ SM NA. When local altimeter setting not received, use Youngstown-Warren Rgnl altimeter setting and increase all DA 61 feet and all MDA 80 feet; increase LNAV Cat C and Circling Cat C visibility ¼ SM.

MISSED APPROACH:
Climb to 3000 direct ZARTO and hold.

AWOS-3PT 124.175	YNG ASOS 123.75	YOUNGSTOWN APP CON ★ 133.95 322.3	UNICOM 123.0 (CTAF) ①
---------------------	--------------------	--------------------------------------	--------------------------



NE-4, 03 DEC 2020 to 31 DEC 2020

NE-4, 03 DEC 2020 to 31 DEC 2020