

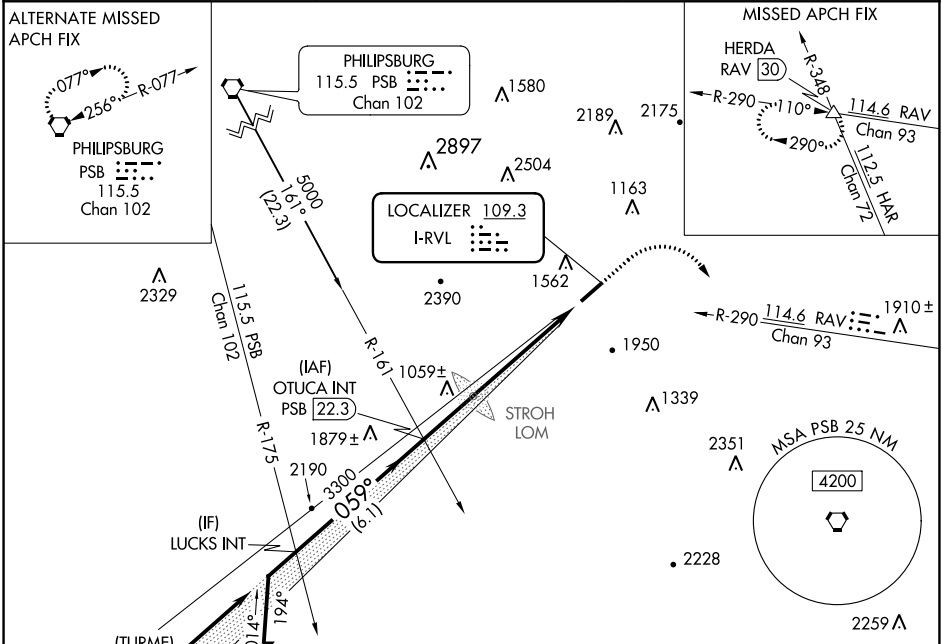
LOC I-RVL	APP CRS	Rwy Idg	5001
109.3	059°	TDZE	819
		Apt Elev	819

LOC RWY 6

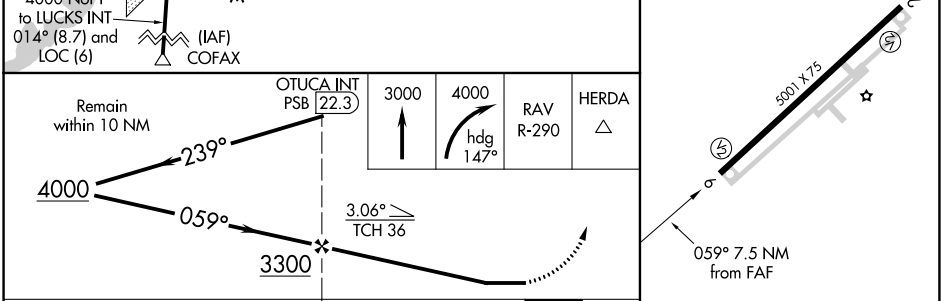
MIFFLIN COUNTY (RVL)

<div><div>NA</div><div>-13°C</div></div>	Circling NA northwest of Rwy 6-24. Helicopter visibility reduction below ¾ SM NA. When local altimeter setting not received, use State College altimeter setting and increase all MDA 100 feet.	MISSED APPROACH: Climb to 3000 then climbing right turn to 4000 via heading 147° and RAV VORTAC R-290 to HERDA INT/RAV 30 DME and hold.
--	---	---

AWOS-3PT 123.85	NEW YORK CENTER 134.8 338.3	UNICOM 122.7 (CTAF) 0
--------------------	--------------------------------	--------------------------



ELEV 819	TDZE 819
----------	----------



		7.5 NM				REIL Rwys 6 and 24 0 MIRL Rwy 6-24 0	
CATEGORY	A	B	C	D			
S-6	1840-1¼ 1021 (1100-1¼)	1840-1½ 1021 (1100-1½)	1840-3 1021 (1100-3)				
CIRCLING	1840-1¼ 1021 (1100-1¼)	1840-1½ 1021 (1100-1½)	1840-3 1021 (1100-3)	2360-3 1541 (1600-3)	FAF to MAP 7.5 NM		
					Knots	60 90 120 150 180	
				Min:Sec	7:30 5:00 3:45 3:00 2:30		