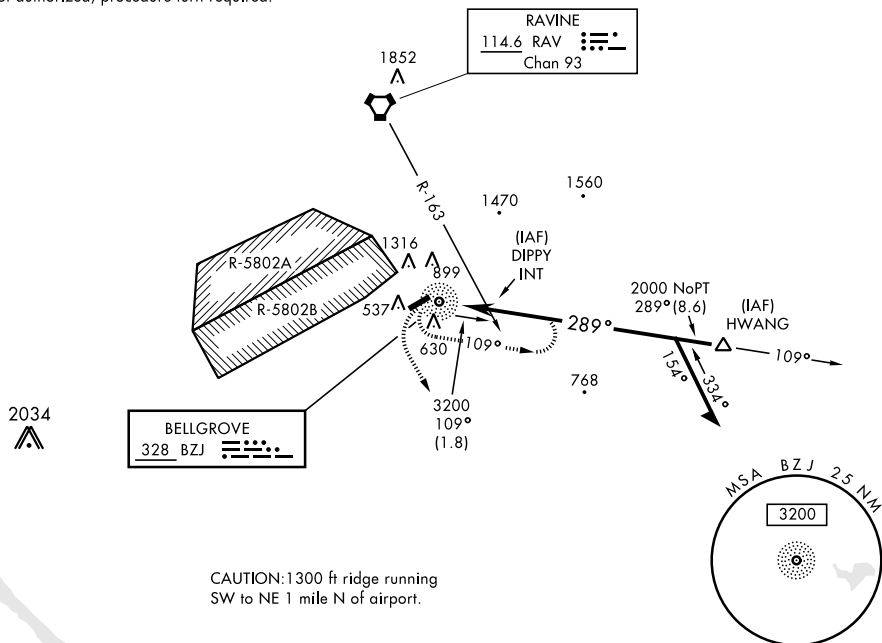


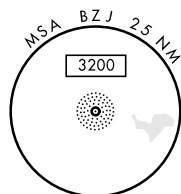
NDB-A

NDB BZJ 328	APCH CRS 289°	Rwy Idg TDZE Arpt Elev N/A N/A 487	AL-6422 [USA]	MUIR AAF (KMUI)
<p>▼ * Circling N of Rwy 7-25 not authorized.</p> <p>▲ When local altimeter setting not received, use Harrisburg INTL altimeter setting and increase MDA 80 ft and increase visibility CAT B ¼ mile.</p>			<p>MISSED APPROACH: Climb to 2000 via heading 160° then climbing left turn to 3000 direct BZJ NDB and hold.</p>	
<p>ASOS 124.175</p>		<p>HARRISBURG APP CON 118.25 269.45</p>		<p>MUIR TOWER ★ 126.2 (CTAF) 0 290.5</p>
		<p>GND CON 121.625 269.525</p>		

Final approach from holding pattern at BZJ NDB
not authorized; procedure turn required.



CAUTION: 1300 ft ridge running SW to NE 1 mile N of airport.



ELEV 487

