

WAAS CH <b>70606</b> <b>W06A</b>	APP CRS <b>055°</b>	Rwy Idg TDZE Apt Elev	<b>5003</b> <b>1451</b> <b>1458</b>
--	------------------------	-----------------------------	---

RNAV (GPS) RWY 6

CLARION COUNTY (AXQ)

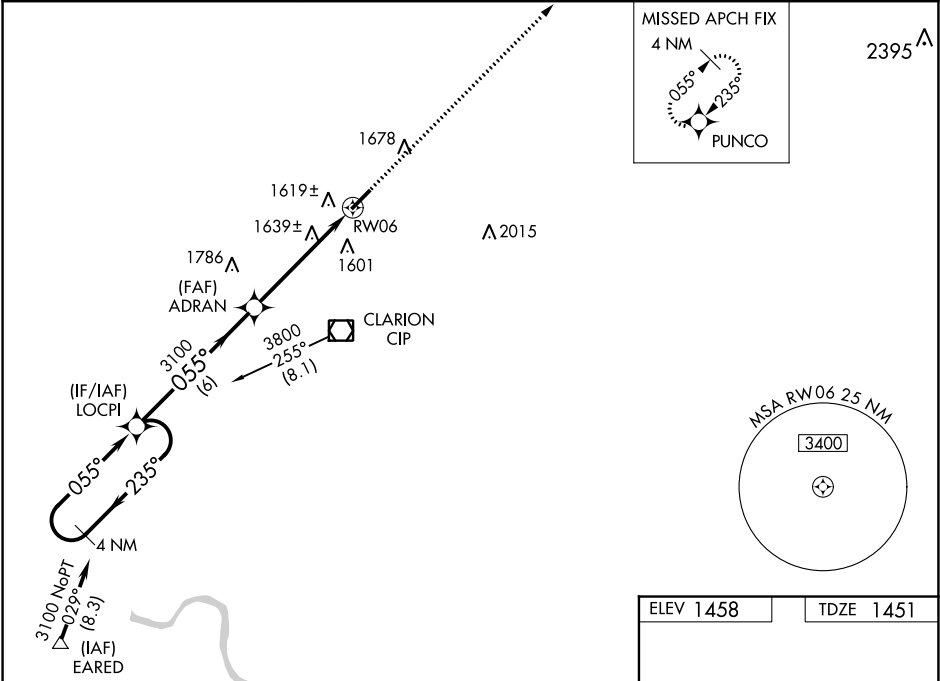
▼

▲ NA

Baro-VNAV NA when using DuBois altimeter setting. For uncompensated Baro-VNAV systems, LNAV/VNAV NA below -17°C (2°F) or above 46°C (114°F). DME/ DME RNP-0.3 NA. Helicopter visibility reduction below ¾ SM NA. When local altimeter setting not received, use DuBois altimeter setting and increase all DAs 108 feet, all MDAs 120 feet and LPV and LNAV/VNAV visibility ¼ mile all Cats. Increase LNAV and Circling Cats C and D visibility ¼ mile. Night Landing: Rwy 24 NA.

MISSED APPROACH: Climb to 3500 direct PUNCO and hold.

AWOS-3 <b>118.275</b>	CLEVELAND CENTER <b>126.725 291.65</b>	UNICOM <b>122.8 (CTAF) 0</b>
--------------------------	---	---------------------------------



4 NM Holding Pattern		LOCPI	ADLAN	3500	PUNCO
3100 ← 235° 055° →		3100	3100	↑	△
GP 3.00° TCH 40					
		6 NM	5 NM		
CATEGORY	A	B	C	D	
LPV DA	1701-1 250 (300-1)				
LNAV/VNAV DA	1985-2 534 (600-2)				
LNAV MDA	1920-1	469 (500-1)	1920-1¼ 469 (500-1¼)	1920-1½ 469 (500-1½)	
CIRCLING	1980-1	522 (600-1)	1980-1½ 522 (600-1½)	2060-2 602 (700-2)	

ELEV 1458

TDZE 1451

REIL Rwy 6 and 24

MIRL Rwy 6-24