

WAAS CH 72916 W14A	APP CRS 137°	Rwy Idg 5005 TDZE 1157 Apt Elev 1162
--	------------------------	---

RNAV (GPS) RWY 14

RNP APCH.



For uncompensated Baro-VNAV systems, LNAV/VNAV NA below -17°C or above 54°C.

MISSED APPROACH: Climb to 5000 direct ASUTE and hold, continue climb-in-hold to 5000.

AWOS-3
123.675

JOHNSTOWN APP CON ★
121.2 299.2

UNICOM
122.7 (CTAF) **L**

Procedure NA for arrivals on
JST VOR/DME airway radials
096 CW 125

Procedure NA for arrivals at
WILTT on V210 eastbound.

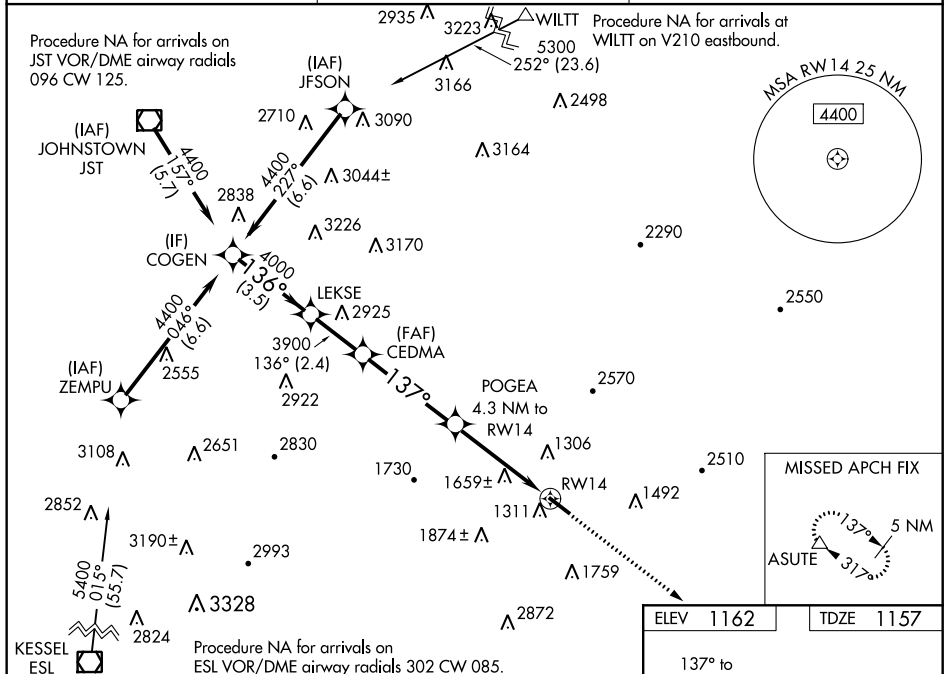



Figure 10 illustrates a LNAV only procedure. The flight path starts at 4400 feet, descends to 4000 feet, then to 3900 feet. It includes waypoints COGEN, LEKSE, CEDMA, and POGEA. Distances between waypoints are 3.5 NM, 2.4 NM, 4.2 NM, 2 NM, and 2.3 NM. A final 2.3 NM segment leads to RW14. Altitudes and distances are marked with asterisks for LNAV only. A 5000 ft ASUTE (Altitude Safety) is indicated.

CATEGORY		A	B	C	D
LPV	DA	1640-1½ 483 (500-1½)			
INAV/ VNAV	DA	2050-4 893 (900-4)			
INAV	MDA	1920-1 763 (800-1)	1920-1¼ 763 (800-1¼)	1920-2½	763 (800-2½)
 CIRCLING		1920-1 758 (800-1)	1960-1¼ 798 (800-1¼)	2200-3 1038 (1100-3)	2940-3 1778 (1800-3)

REIL Rwy 14 and 32 **L**
MIRL Rwy 14-32 **L**