

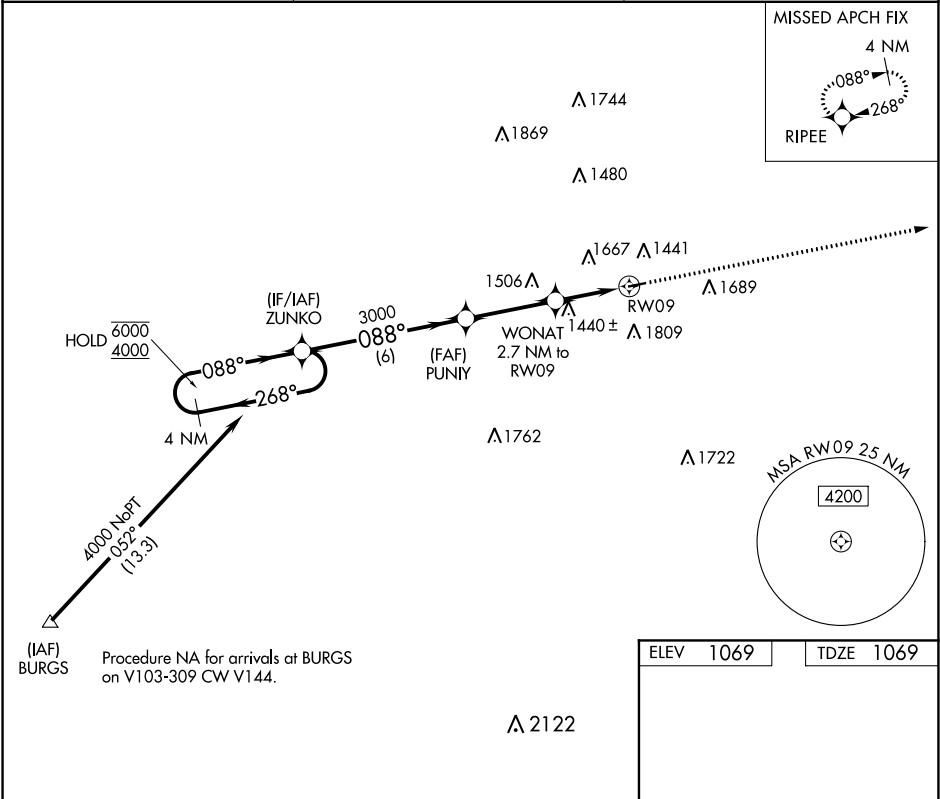
APP CRS	Rwy Idg	3500
088°	TDZE	1069
	Apt Elev	1069

RNAV (GPS) Z RWY 9

GREENE COUNTY (WAY)

RNP APCH.	MISSED APPROACH: Climb to 4000 direct RIPEE and hold, continue climb-in-hold to 4000.
<div><div>▼</div><div>NA</div></div> <div>Circling Rwy 27 NA at night. Rwy 9 helicopter visibility reduction below 1 SM NA. Use Washington altimeter setting.</div>	

AFJ AWOS-3PT 119.175	CLARKSBURG APP CON★ 121.15 284.65	UNICOM 122.8 (CTAF) 0
-------------------------	--------------------------------------	--------------------------



4 NM Holding Pattern

Visual Segment - Obstacles.

4000

RIPEE

6000 ← 268°

4000 → 088°

ZUNKO

PUNY

WONAT 2.7 NM to RW09

RW09

3500 X 75

27

6 NM

3.3 NM

2.7 NM

CATEGORY	A	B	C	D
LNNAV MDA	1760-1	691 (700-1)	1760-2 691 (700-2)	NA
<div>CIRCLING</div>	1880-1¼ 811 (900-1¼)	2220-1½ 1151 (1200-1½)	2220-3 1151 (1200-3)	NA

MIRL Rwy 9-27

NE-4, 03 DEC 2020 to 31 DEC 2020

NE-4, 03 DEC 2020 to 31 DEC 2020