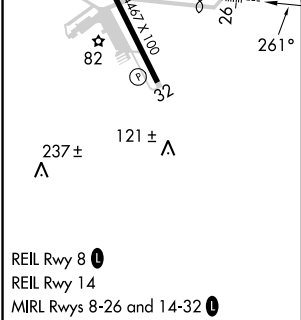
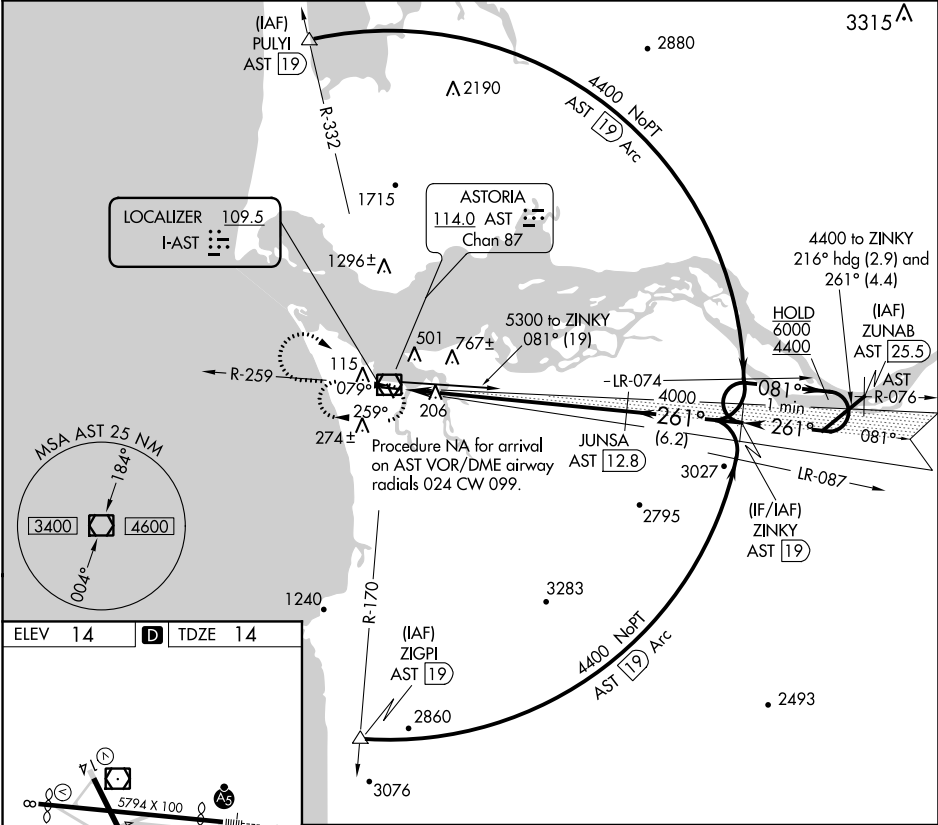


LOC I-AST	APP CRS	Rwy Idg	4780
109.5	261°	TDZE	14
		Apt Elev	14

ILS RWY 26  
ASTORIA RGNL (AST)

DME required for procedure entry.	MALSR	MISSED APPROACH: Climb to 1500 then climbing right turn to 2900 direct AST VOR/DME and hold.
Rwy 26 helicopter visibility reduction below 3/4 SM NA. Inoperative table does not apply.		

ASOS 135.375	SEATTLE CENTER 124.2 317.6	UNICOM 122.8 (CTAF)
-----------------	-------------------------------	------------------------



1500	2900	AST	ZINKY AST 19	One Minute Holding Pattern
JUNSA AST 12.8	4000	261°	081°	6000
4000	261°	4400	GS 3.00°	TCH 56
12.3 NM	6.2 NM			
CATEGORY	A	B	C	D
S-ILS 26		264-1	250 (300-1)	

NW-1, 03 DEC 2020 to 31 DEC 2020

NW-1, 03 DEC 2020 to 31 DEC 2020