

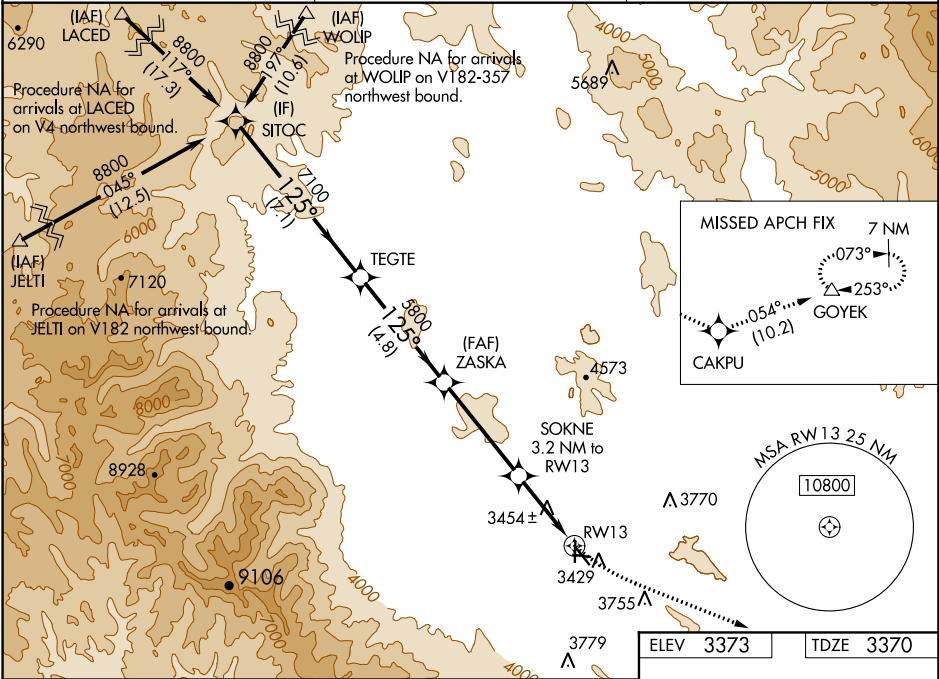
WAAS CH 90133 W13A	APP CRS 125°	Rwy Idg TDZE Apt Elev	5085 3370 3373
--	------------------------	-----------------------------	---

RNAV (GPS) RWY 13
BAKER CITY MUNI (BKE)

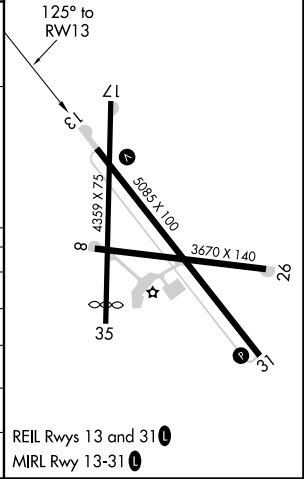
⚠ For uncompensated Baro-VNAV systems, LNAV/VNAV NA below -22°C (-7°F) or above 51°C (124°F). Rwy 13 helicopter visibility reduction below ¾ SM NA. DME/DME RNP-0.3 NA. Circling Rwy 8, 17, 26, and 35 NA at night.

MISSED APPROACH: Climb to 3800 then climbing left turn to 11000 direct CAKPU and on track 054° to GOYEK and hold, continue climb-in-hold to 11000. # Missed approach requires minimum climb of 266 feet per NM to 4580.

ASOS 134.275	SALT LAKE CENTER 128.05 306.95	UNICOM 123.0 (CTAF)
-------------------------------	---	--------------------------------------



SITOC		TEGTE		ZASKA		3800 ↑	11000 ↷	CAKPU ✦	tr 054°	GOYEK △
8800		7100		5800		SOKNE 3.2 NM to *2.4 NM RW13 to RW13		*LNAV only		
GP 3.00° TCH 55		5800		*4420		RW13		RW13		
7.1 NM		4.8 NM		4.3 NM		0.8 NM		2.4 NM		
CATEGORY	A		B		C		D			
LPV DA #	3621-¾		251 (300-¾)							
LPV DA	3833-1½		463 (500-1½)							
LNAV/ VNAV DA	3916-1⅞		546 (600-1⅞)							
LNAV MDA	4200-1 830 (900-1)	4200-1¼ 830 (900-1¼)	4200-2½		830 (900-2½)					
CIRCLING	4200-1¼	827 (900-1¼)		4560-3 1187 (1200-3)		4720-3 1347 (1400-3)				



NW-1, 03 DEC 2020 to 31 DEC 2020

NW-1, 03 DEC 2020 to 31 DEC 2020