

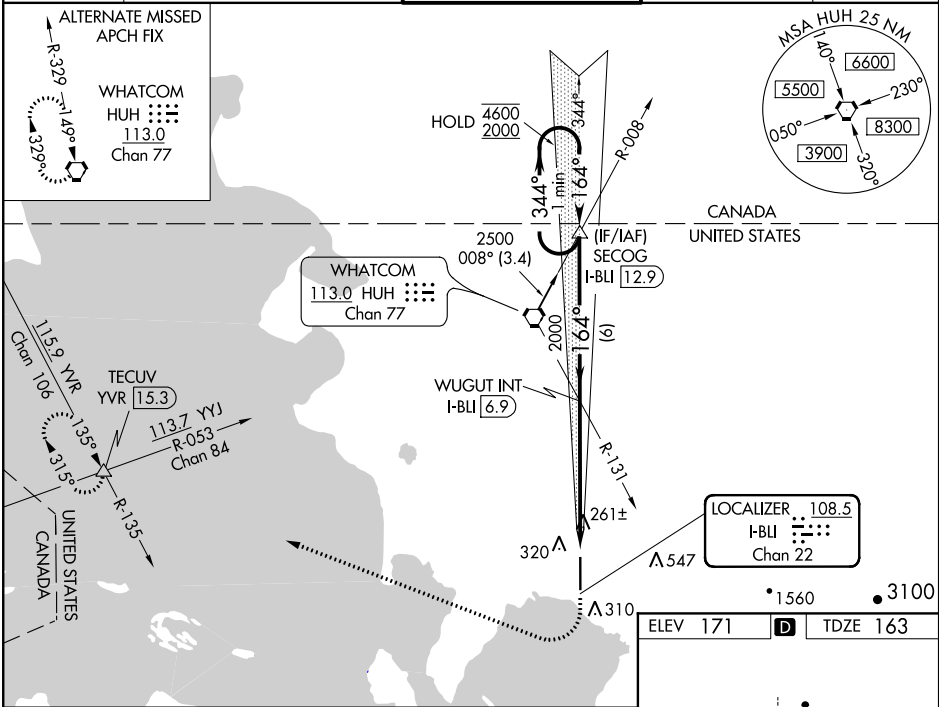


LOC/DME I-BLI <b>108.5</b> Chan <b>22</b>	APP CRS <b>164°</b>	Rwy Idg TDZE <b>163</b> Apt Elev <b>171</b>
---	------------------------	---

ILS RWY 16 (SA CAT I)  
BELLINGHAM INTL (BLI)

DME or RADAR required.	MALSR 	MISSED APPROACH: Climb to 700 then climbing right turn to 2000 on heading 275° and on YVR VOR/DME R-135 to TECUV INT/YVR 15.3 DME and hold.
 Requires specific OPSPEC, MSPEC or LOA approval and use of HUD to DH.		

ATIS <b>134.45</b>	VICTORIA TERMINAL APP CON <b>132.7 290.8</b>	BELLINGHAM TOWER ★ <b>124.9 (CTAF) 379.3</b>	GND CON <b>127.4 379.3</b>	UNICOM <b>122.95</b>
-----------------------	---	---	-------------------------------	-------------------------



NW-1, 03 DEC 2020 to 31 DEC 2020

NW-1, 03 DEC 2020 to 31 DEC 2020