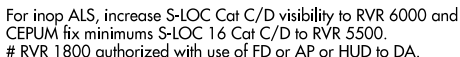
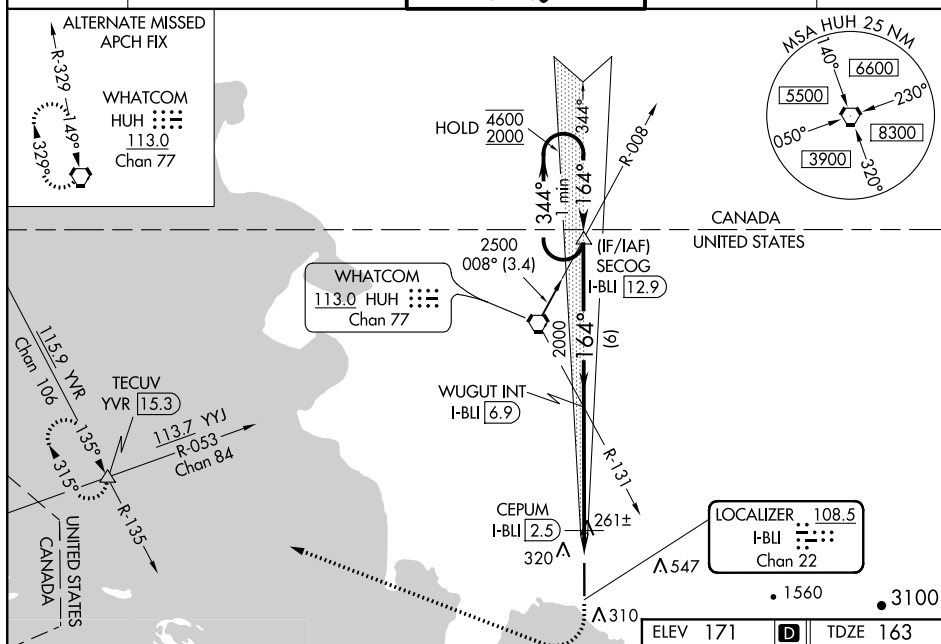


ILS or LOC RWY 16
BELLINGHAM INTL (BLI)

MISSED APPROACH: Climb to 700 then climbing right turn to 2000 on heading 275° and on YVR VOR/DME R-135 to TECUV INT/YVR 15.3 DME and hold.



ATIS 134.45	VICTORIA TERMINAL APP CON 132.7 290.8	BELLINGHAM TOWER ★ 124.9 (CTAF) 379.3	GND CON 127.4 379.3	UNICOM 122.95
----------------	------------------------------------------	------------------------------------------	------------------------	------------------



One Minute Holding Pattern

SECOG I-BU 12.9

WUGUT INT I-BU 6.9

2000

CEPUM I-BU 2.5

I-BU 1.3

*LOC only

4600 2000

344° 164°

GS 3.00° TCH 51

6 NM 4.4 NM 1.2 NM

580

2000

700 2000 YVR R-135

TECUV

164° 5.6 NM from FAF

91

6700 X 150

TWR 247

CATEGORY	A	B	C	D
S-ILS 16 #	363/24 200 (200-½)			
S-LOC 16	580/24 417 (500-½)		580/40 417 (500-¾)	
CIRCLING	640-1 469 (500-1)		900-2 729 (800-2)	1160-3 989 (1000-3)
CEPUM FIX MINIMUMS (DME REQUIRED)				
S-LOC 16	520/24 357 (400-½)		520/30 357 (400-⅝)	
CIRCLING	640-1 469 (500-1)		900-2 729 (800-2)	1160-3 989 (1000-3)

REIL Rwy 34 1

HIRL Rwy 16-34 1

FAF to MAP 5.6 NM

Knots	60	90	120	150	180
Min:Sec	5:36	3:44	2:48	2:14	1:52