

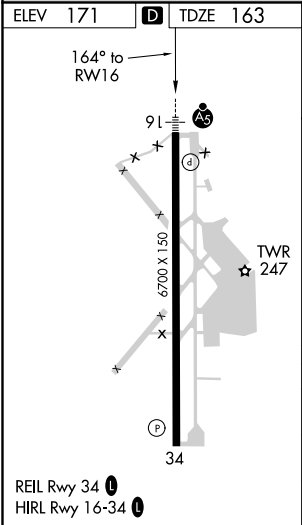
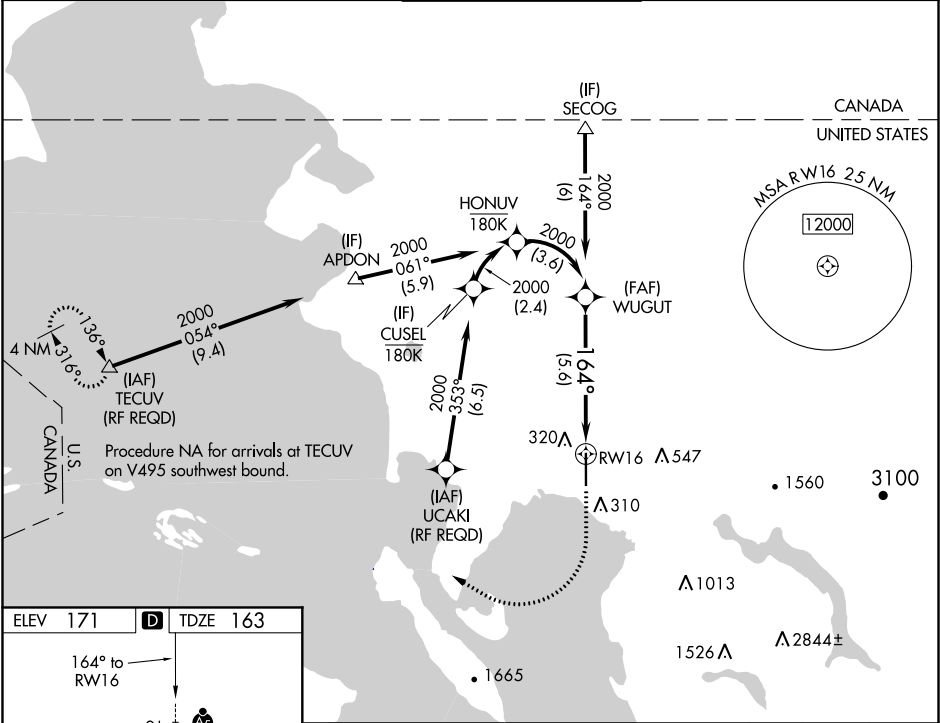
APP CRS	Rwy Idg	6700
164°	TDZE	163
	Apt Elev	171

RNAV (RNP) Z RWY 16

BELLINGHAM INTL (BLI)

RNP AR APCH	MALSR	MISSED APPROACH: Climb to 700 then climbing right turn to 2000 direct TECUV and hold.
▼ For uncompensated Baro-VNAV systems, procedure NA below -10°C or above 54°C. For inop ALS, increase RNP 0.27 all Cats visibility to RVR 4500, increase RNP 0.30 all Cats visibility to RVR 6000.		

ATIS 134.45	VICTORIA TERMINAL APP CON 132.7 290.8	BELLINGHAM TOWER★ 124.9 (CTAF) 0 379.3	GND CON 127.4 379.3	UNICOM 122.95
----------------	--	---	------------------------	------------------



WUGUT		700	2000	TECUV
2000		↑	↷	△
2000		164°		
GP 3.00° TCH 51		See planview for multiple IF locations.		
5.6 NM		RW16		
CATEGORY	A	B	C	D
RNP 0.27 DA	483/24 320 (400-½)			
RNP 0.30 DA	580/45 417 (500-¾)			
AUTHORIZATION REQUIRED				

NW-1, 03 DEC 2020 to 31 DEC 2020

NW-1, 03 DEC 2020 to 31 DEC 2020