

WAAS CH <b>56222</b> <b>W28A</b>	APP CRS <b>282°</b>	Rwy Idg <b>10518</b> TDZE <b>3517</b> Apt Elev <b>3652</b>
--	------------------------	--

RNAV (GPS) Y RWY 28R

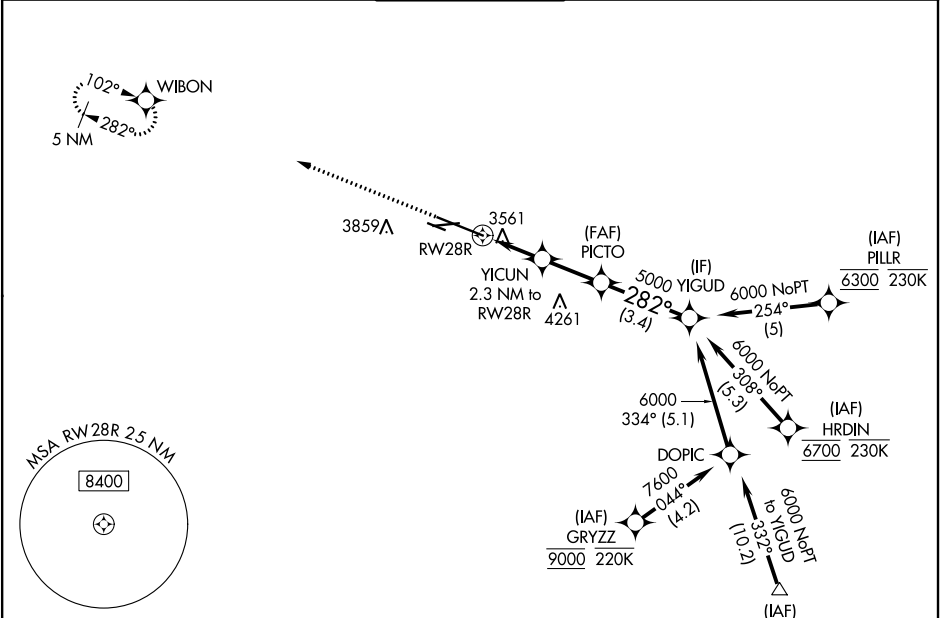
BILLINGS LOGAN INTL (BIL)

⚠

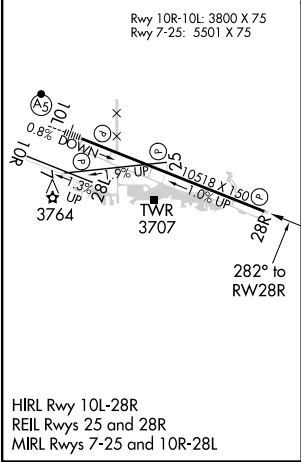
For uncompensated Baro-VNAV systems, LNAV/VNAV NA below -24°C (-11°F) or above 50°C (123°F). Rwy 28R helicopter visibility reduction below ¾ SM NA. DME/DME RNP-0.3 NA.

MISSED APPROACH: Climb to 5900 direct WIBON and hold.

ATIS <b>126.3</b>	BILLINGS APP CON <b>120.5 284.6</b>	BILLINGS TOWER <b>127.2 257.8</b>	GND CON <b>121.9</b>	CLNC DEL <b>121.9</b>
----------------------	--	--------------------------------------	-------------------------	--------------------------



ELEV <b>3652</b>	<b>D</b>	TDZE <b>3517</b>
------------------	----------	------------------



5155				
5900 WIBON				
*LNAV only.				
RW28R 0.9 NM 1.4 NM 2.3 NM 3.4 NM				
YICUN 2.3 NM to RW28R PICTO 5000 YIGUD 6000				
*0.9 NM to RW28R 4260*				
GP 3.00° TCH 56				
CATEGORY	A	B	C	D
LPV DA	3767-¾ 250 (200-¾)			
LNAV/VNAV DA	3786-⅞ 269 (200-⅞)			
LNAV MDA	3820-1 303 (200-1)			
CIRCLING	4100-1 448 (500-1)	4160-1 508 (600-1)	4180-1½ 528 (600-1½)	4580-3 928 (1000-3)