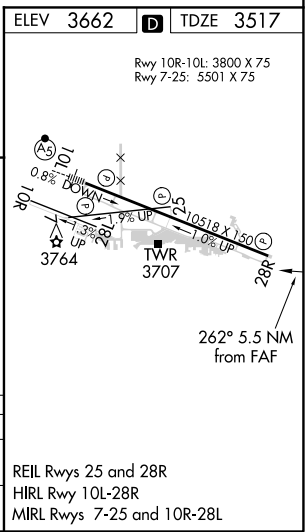
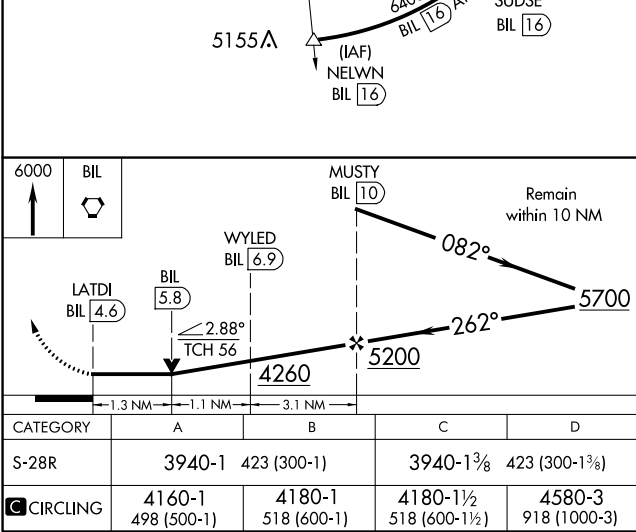
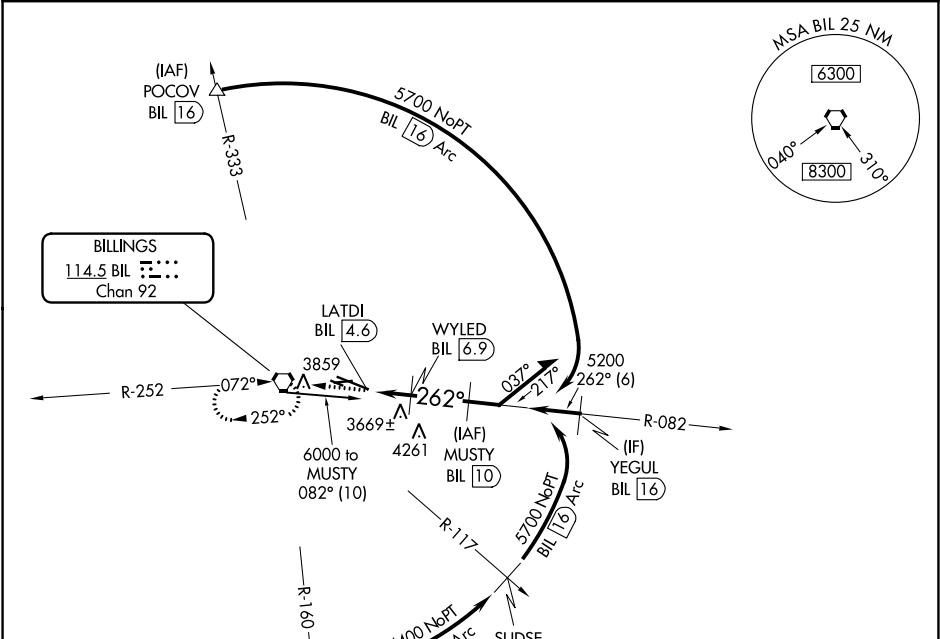


VORTAC BIL	APP CRS	Rwy Idg	10518
114.5	262°	TDZE	3517
Chan 92		Apt Elev	3662

VOR/DME RWY 28R  
BILLINGS LOGAN INTL (BIL)

Helicopter visibility reduction below ¾ SM NA.		MISSED APPROACH: Climb to 6000 direct BIL VORTAC and hold, continue climb-in-hold to 6000.		
--	--	--	--	--

ATIS 126.3	BILLINGS APP CON 120.5 284.6	BILLINGS TOWER 127.2 257.8	GND CON 121.9	CLNC DEL 121.9
---------------	---------------------------------	-------------------------------	------------------	-------------------



NW-1, 03 DEC 2020 to 31 DEC 2020

NW-1, 03 DEC 2020 to 31 DEC 2020