

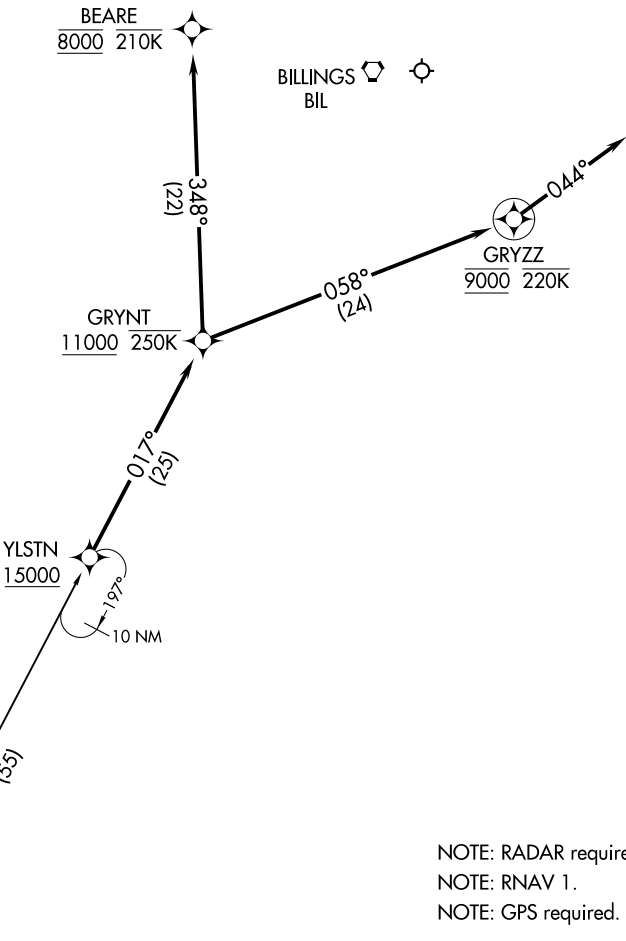
(YLSTN.YLSTN3) 18256

YLSTN THREE ARRIVAL (RNAV)

BILLINGS LOGAN INTL (BIL)
BILLINGS, MONTANA

AL-48 (FAA)

BILLINGS APP CON
120.5 284.6
ATIS
126.3
BILLINGS TOWER
127.2 257.8
GND CON
121.9



NOTE: RADAR required.
NOTE: RNAV 1.
NOTE: GPS required.

NOTE: Chart not to scale.

ARRIVAL ROUTE DESCRIPTION

JEKUG TRANSITION (JEKUG.YLSTN3)

From YLSTN on track 017° to cross GRYNT at or above 11000 and at or below 250K.

LANDING RUNWAY 10L: From GRYNT on track 348° to cross BEARE at 8000 and at or below 210K. Expect assigned approach or RADAR vectors to final approach course.

LANDING RUNWAY 28R: From GRYNT on track 058° to cross GRYZZ at 9000 and at or below 220K, then on heading 044°. Expect assigned approach or RADAR vectors to final approach course.

YLSTN THREE ARRIVAL (RNAV)

(YLSTN.YLSTN3) 13SEP18

BILLINGS, MONTANA
BILLINGS LOGAN INTL (BIL)

NW-1, 03 DEC 2020 to 31 DEC 2020

NW-1, 03 DEC 2020 to 31 DEC 2020