

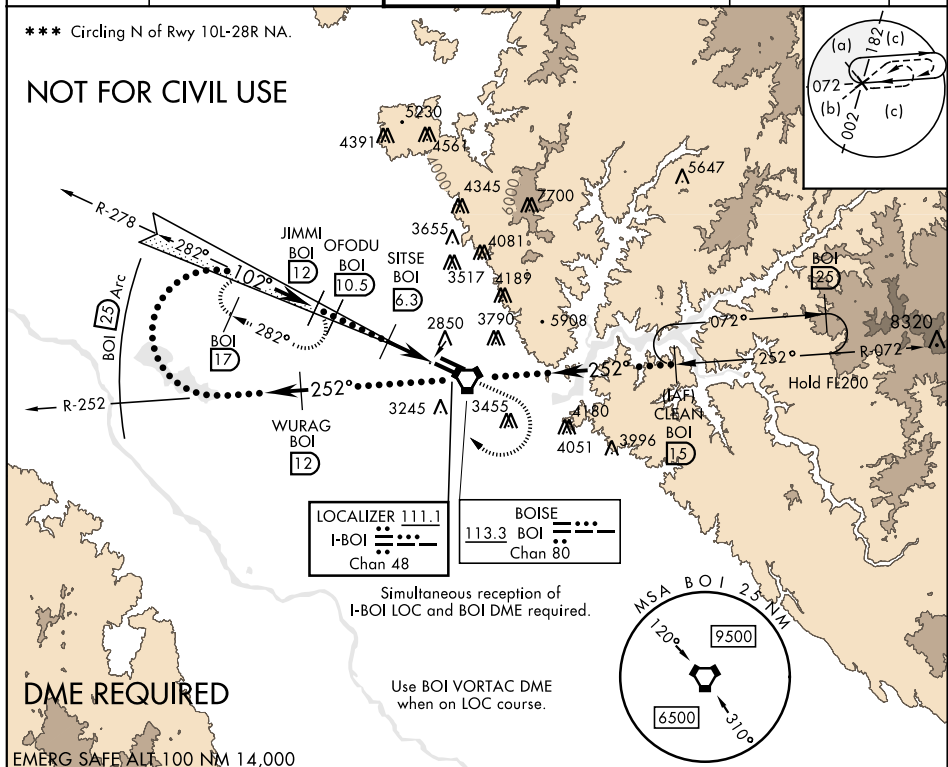
HI-ILS Z or LOC Z RWY 10R

LOC I-BOI 111.1	APCH CRS 102°	Rwy ldg TDZE Arpt Elev 9763 2836 2871	JAL-57 [USAF]	BOISE AIR TERMINAL (GOWEN FLD) (KBOI)
* When ALS inop, increase RVR to 40 and vis to ¾ mile. ** When ALS inop, increase RVR to 55 and vis to 1½ miles.			ALSF-2	MISSED APPROACH: Climb to 3700 then climbing right turn to 5000 on heading 320° and BOI VORTAC R-278 to JIMMI BOI 12 DME and hold.

ATIS 123.9 290.4	BIG SKY APP CON 119.6 269.4	BOISE TOWER 118.1 257.8	GND CON 121.7 348.6	CLNC DEL 125.9 323.2	ASOS
----------------------------	---------------------------------------	-----------------------------------	-------------------------------	--------------------------------	------

*** Circling N of Rwy 10L-28R NA.

NOT FOR CIVIL USE



3700	5000	JIMMI BOI 12	WURAG BOI R-252 12	VGSI and ILS glidepath not coincident (VGSI angle 3.00%/55)	CLEAN R-072 BOI 15	ELEV 2871	TDZE 2836
Right at 12,000 remain within 25 NM of BOI VORTAC	102°	252°	252°	252°	102° 3.9 NM from FAF	2948	2908
GS 3.00° TCH 58	5900	5500	4100	4028	2887	2897	281
3.6 NM	0.3						
CATEGORY	C						
S-ILS 10R *	3036/18	200	(200-½)				
S-LOC 10R **	3180/30	344	(400-¾)				
*** CIRCLING	3740-2½ 869 (900-2½)	3820-3	949	(1000-3)			
TDZL/CL Rwy 10R-28L HIRL Rwy 10L-28R, 10R-28L REIL Rwy 10L							

HI-ILS Z or LOC Z RWY 10R