

VORTAC BOI <b><u>113.3</u></b> Chan <b>80</b>	APCH CRS <b>098°</b>	Rwy Idg <b>9763</b> TDZE <b>2836</b> Arpt Elev <b>2871</b>
---	-------------------------	--

HI-VOR/DME or TACAN RWY 10R

JAL-57 [USAF]

BOISE AIR TERMINAL (GOWEN FLD)

(KBOI)

**T** \* When ALS inop, increase CAT DE RVR to 60 and vis to 1¼ miles.

**\*\* Circling N of Rwy 10L-28R NA.**

ALSF-2

**MISSED APPROACH:** Climb to 3700 then climbing right turn to 5000 via heading 320° to intercept BOI VORTAC R-278 then direct JIMMI/12 DME and hold

ATIS  
123.9 290.4

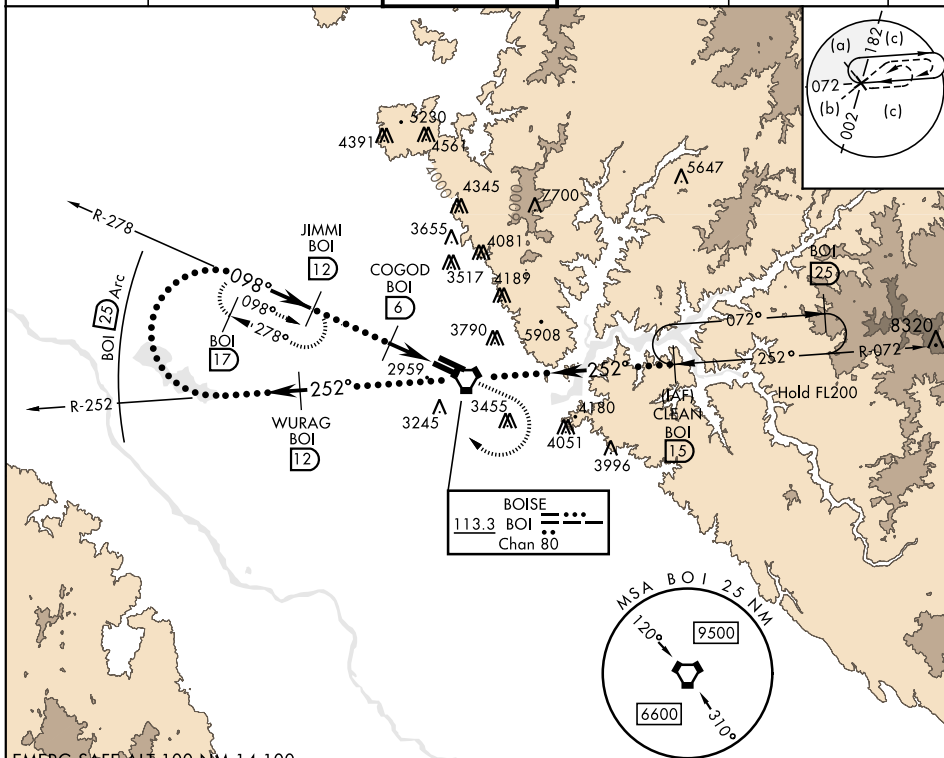
BIG SKY APP CON  
119.6 269.4

BOISE TOWER  
118.1 257.8

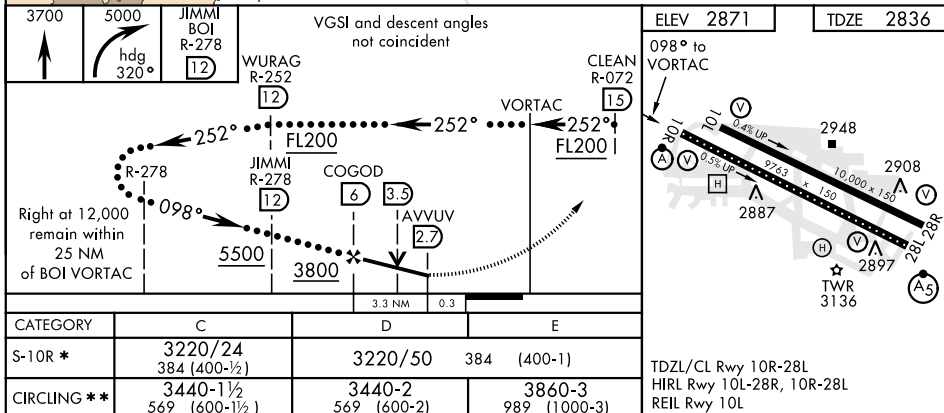
GND CON  
121.7 348.6

CLNC DEL  
**125.9 323.2**

ASOS



EMERG SAFE ALT 100 NM 14,100



BOISE, IDAHO

43°34'N-116°13'W

BOISE AIR TERMINAL (GOWEN FLD)

(KBOI)

Amdt 1 07MAR13

HI-VOR/DME or TACAN RWY 10R