

LOC/DME I-BOI	APP CRS	Rwy Idg	10R	10L
<b>111.1</b>	<b>102°</b>	TDZE	<b>9763</b>	<b>10000</b>
Chan <b>48</b>		Apt Elev	<b>2836</b>	<b>2844</b>
			<b>2871</b>	<b>2871</b>

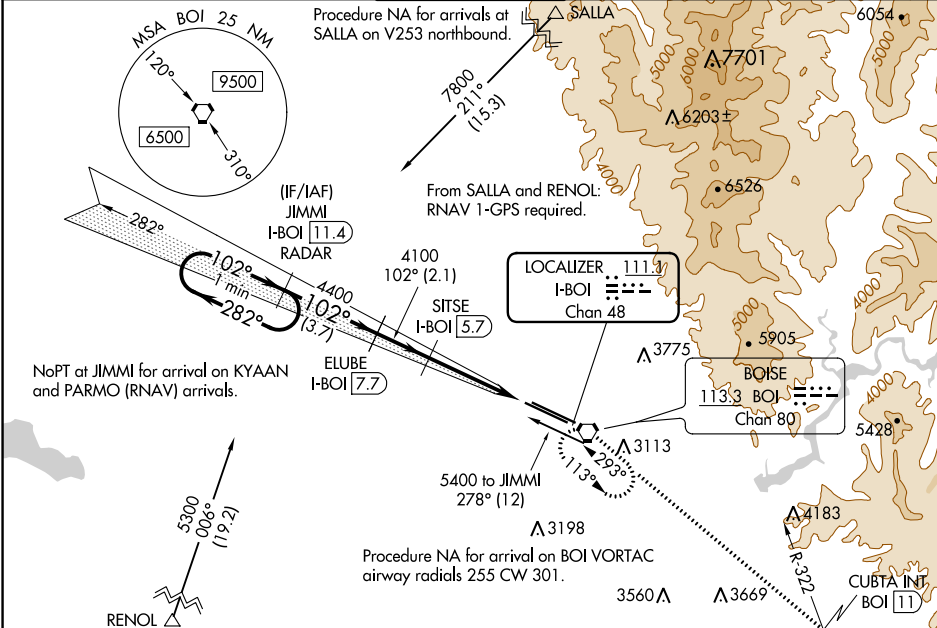
ILS Y or LOC Y RWY 10R  
BOISE AIR TERMINAL/GOWEN FIELD (BOI)

**⚠** Circling NA north of Rwy 10L-28R. DME required. For inop ALS, increase S-LOC 10R Cats C/D visibility to RVR 5500.

ALSF-2 Rwy 10R

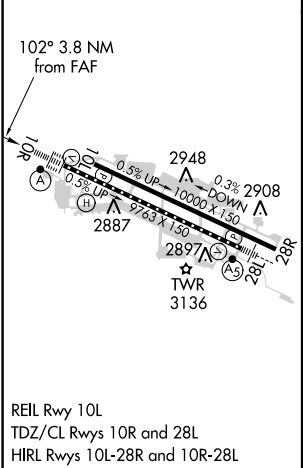
MISSED APPROACH: Climb to 6000 on BOI VORTAC R-113 to CUBTA INT/BOI VORTAC 11 DME and right turn direct BOI VORTAC and hold.

D-ATIS	BIG SKY APP CON	BOISE TOWER	GND CON	CLNC DEL
<b>123.9 290.4</b>	<b>119.6 269.4</b>	<b>118.1 257.8</b>	<b>121.7 348.6</b>	<b>125.9 323.2</b>



ELEV 2871	TDZE 10R 2836
	TDZE 10L 2844

RADAR or DME REQUIRED



One Minute Holding Pattern (VGSi Angle 3.00/TCH 64).			
VGSi and descent angles not coincident (VGSi Angle 3.00/TCH 64).			
*LOC only			
CATEGORY	A	B	C
S-ILS 10R	3036/18 200 (200-½)		
S-LOC 10R	3200/24	364 (400-½)	3200/35 364 (400-¾)
SIDESTEP 10L	3220-1	376 (400-1)	3220-1½ 376 (400-2)
CIRCLING	3440-1	569 (600-1)	3740-2½ 3820-3
			869 (900-2½) 949 (1000-3)