

| | | |
|-------------|----------|--------------|
| APP CRS | Rwy Idg | 10000 |
| 282° | TDZE | 2871 |
| | Apt Elev | 2871 |

RNAV (RNP) X RWY 28R
BOISE AIR TERMINAL/GOWEN FIELD (BOI)

T
A NA For uncompensated Baro-VNAV systems, procedure NA below
-14°C (7°F) or above 52°C (126°F). RF required. GPS required.

MISSED APPROACH: Climb to 6000 on track 282° to ATTOL and hold.

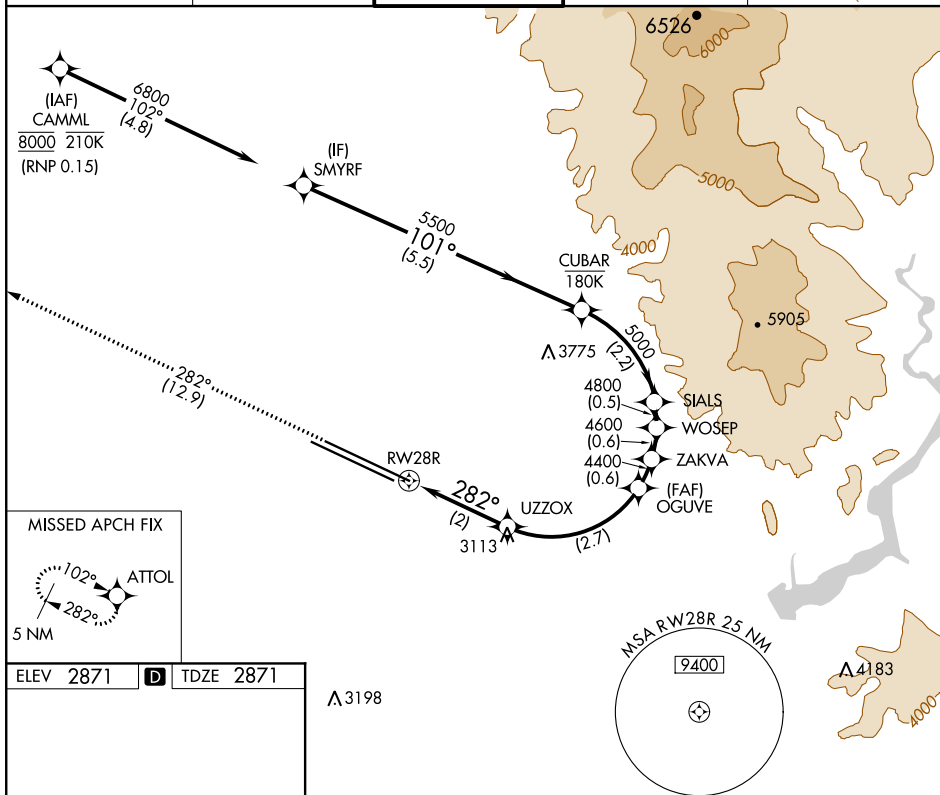
D-ATIS
3.9 290.4

BIG SKY APP CON
119.6 269.4

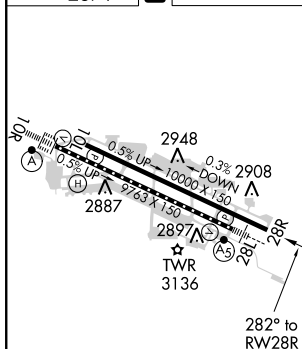
BOISE TOWER
118.1 257.8

GND CON
121.7 348.6

CLNC DEL
125.9 323.2



| | | |
|-----------|----------|-----------|
| ELEV 2871 | D | TDZE 2871 |
|-----------|----------|-----------|



REIL Rwy 10L
TDZ/CL Rwy 10R and 28L
HIRL Rwy 10L-28R and 10R-28L

6000 ATTOL VGS1 and RNAV glidepath not coincident (VGS1 Angle 3.00/TCH 70).

tr 282°

RW28R 3548 UZZOX 4400 OGIVE 4400 ZAKVA 4600 WOSEP 4800 SIALS 5000 CUBAR 5500 SMYRF 6800

282° 101°

GP 3.00° TCH 55

2 NM 2.7 NM 0.6 NM 0.6 NM 0.5 NM 2.2 NM 5.5 NM

| CATEGORY | A | B | C | D |
|-------------|---|---|---|---|
| RNP 0.15 DA | 3288-1 $\frac{3}{8}$ 417 (500-1 $\frac{3}{8}$) | | | |

AUTHORIZATION REQUIRED