

APP CRS	Rwy Idg	9763
102°	TDZE	2836
	Apt Elev	2871

RNAV (RNP) Z RWY 10R

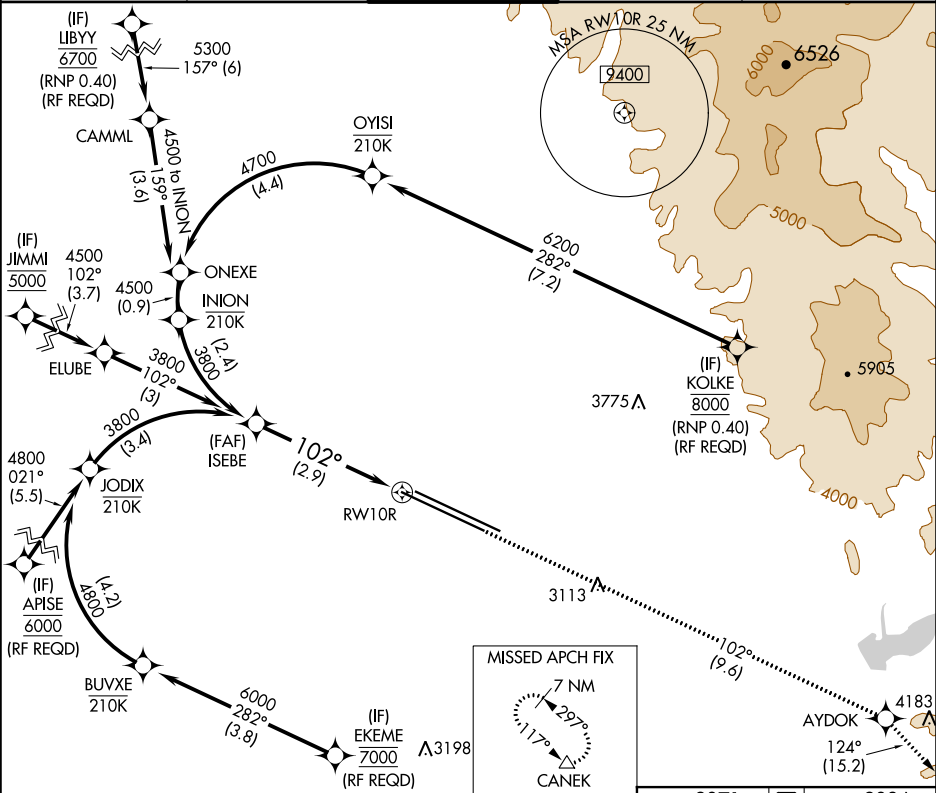
BOISE AIR TERMINAL/GOWEN FIELD (BOI)

▼ For uncompensated Baro-VNAV systems, procedure NA below -14°C (7°F) or above 51°C (124°F). GPS required.

ALSF-2

MISSED APPROACH: Climb to 7300 on track 102° to AYDOK and on track 124° to CANEK and hold.

D-ATIS	BIG SKY APP CON	BOISE TOWER	GND CON	CLNC DEL
123.9 290.4	119.6 269.4	118.1 257.8	121.7 348.6	125.9 323.2



VGSI and RNAV glidepath not coincident (VGSI Angle 3.00/TCH 64).

GP 3.00° TCH 58

ISEBE 3800

3800

102°

2.9 NM

RWY 10R

See planview for multiple IF locations.

CATEGORY	A	B	C	D
RNP 0.15 DA	3163/30 327 (300-¾)			
RNP 0.30 DA	3199/40 363 (400-¾)			

ELEV 2871

TDZE 2836

102° to RWY 10R

Diagram showing vertical profile with altitudes 2948, 2908, 2887, 2871, 2836 and track angles 0.5% UP, 0.3% DOWN, 0.5% UP.

REIL Rwy 10L

TDZ/CL Rwy 10R and 28L

HIRL Rwy 10L-28R and 10R-28L