

WAAS CH 40203 W10B	APP CRS 102°	Rwy Idg 9763 TDZE 2836 Apt Elev 2871
--	------------------------	---

RNAV (GPS) Y RWY 10R
BOISE AIR TERMINAL/GOWEN FIELD (BOI)

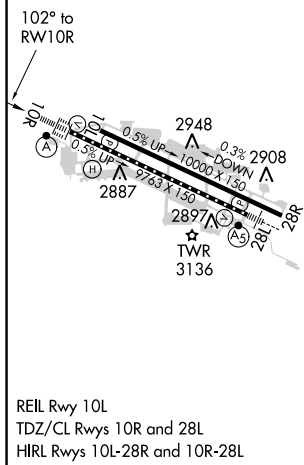
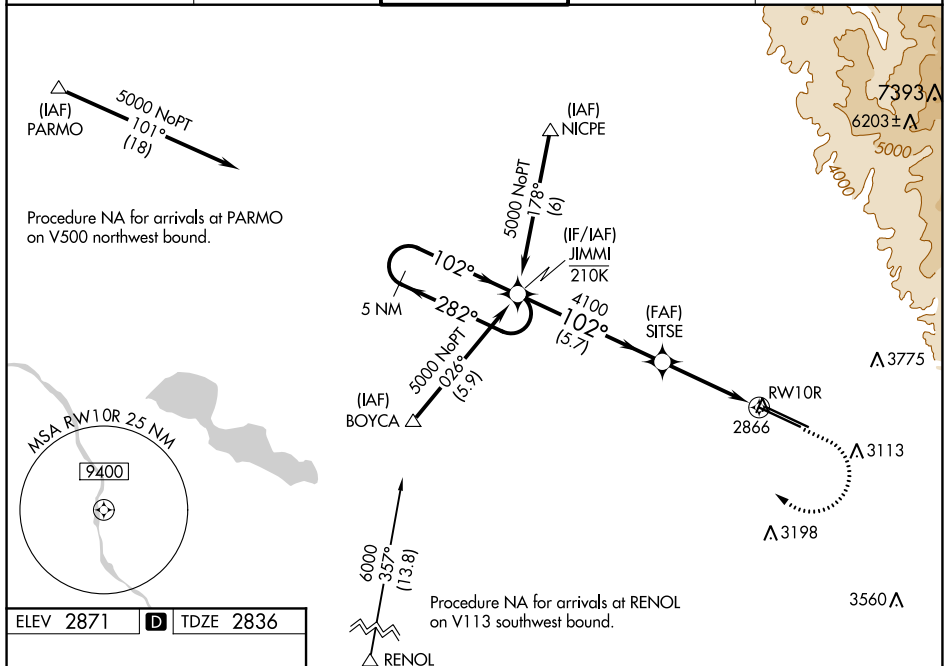
T For uncompensated Baro-VNAV systems, LNAV/VNAV NA below
A -12°C (11°F) or above 54°C (130°F). DME/DME RNP-0.3 NA.
Circling NA north of Rwy 10L-28R. For inop ALS, increase LPV
Cat E visibility to RVR 4000, LNAV/VNAV all Cats and LNAV Cats
C/D/E visibility to RVR 6000.

ALSF-2



MISSED APPROACH: Climb to 3300 then climbing right turn to 6000 direct JIMMI and hold, continue climb-in-hold to 6000.

D-ATIS 123.9 290.4	BIG SKY APP CON 119.6 269.4	BOISE TOWER 118.1 257.8	GND CON 121.7 348.6	CLNC DEL 125.9 323.2
-----------------------	--------------------------------	----------------------------	------------------------	-------------------------



5 NM Holding Pattern

VGSI and RNAV glidepath not coincident (VGSI Angle 3.00/TCH 64).

3300 6000 JIMMI

← 282° 102° →

6000 5000 4100

GP 3.00° TCH 58

* 1.1 NM to RW10R

* RNAV only

5.7 NM 2.7 NM 1.1 NM

CATEGORY	A	B	C	D	E
LPV DA	3036/18 200 (200-½)				
LNAV/VNAV DA	3182/40 346 (400-¾)				
LNAV MDA	3240/24 404 (400-½)		3240/40 404 (400-¾)		
C CIRCLING	3440-1 569 (600-1)		3740-2½ 869 (900-2½)	3820-3 949 (1000-3)	3880-3 1009 (1100-3)