

VORTAC BOI <b>113.3</b> Chan <b>80</b>	APP CRS <b>278°</b>	Rwy Idg TDZE Apt Elev	28L <b>9763</b> <b>2853</b> <b>2871</b>	28R <b>10000</b> <b>2871</b> <b>2871</b>
--	------------------------	-----------------------------	--	---

# VOR/DME or TACAN RWY 28L

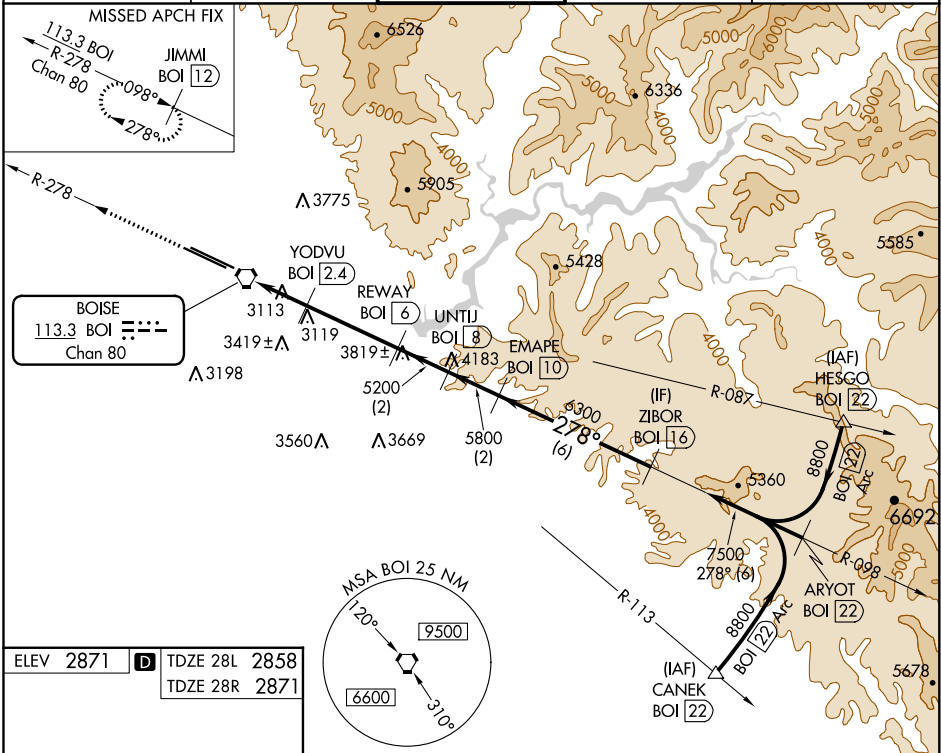
BOISE AIR TERMINAL/GOWEN FIELD (BOI)

**⚠** Circling NA north of Rwy 10L-28R. For inoperative MALSR increase S-28L Cat E visibility ½ mile.

**MALSR**  
Rwy 28L

**MISSED APPROACH:** Climb to 4500 via BOI VORTAC R-278 to JIMMI/12 DME and hold.

D-ATIS <b>123.9 290.4</b>	BIG SKY APP CON <b>119.6 269.4</b>	BOISE TOWER <b>118.1 257.8</b>	GND CON <b>121.7 348.6</b>	CLNC DEL <b>125.9 323.2</b>
------------------------------	---------------------------------------	-----------------------------------	-------------------------------	--------------------------------



ELEV 2871 **D** TDZE 28L 2858  
TDZE 28R 2871

REIL Rwy 10L  
TDZ/CL Rwy 10R and 28L  
HIRL Rwy 10L-28R and 10R-28L

278° 6.8 NM from FAF

	BOI R-278	YODVU BOI 2.4	REWAY BOI 6	UNTIJ BOI 8	EMAPE BOI 10	ZIBOR BOI 16
	BOI 0.7	3.16° TCH 50				
	3980	5200	5800	6300	7500	
	0.8	0.7	1.7 NM	3.6 NM	2 NM	2 NM
CATEGORY	A	B	C	D	E	
S-28L	3380/24	522 (600-½)	3380/50 522 (600-1)	3380/60	522 (600-1¼)	
SIDESTEP RWY 28R	3380/60	509 (600-1¼)	3380-1¾ 509 (600-1½)	3380-2¼	509 (600-2¼)	
CIRCLING	3440-1	569 (600-1)	3440-1½ 569 (600-1½)	3440-2	3820-3 949 (1000-3)	