

APP CRS	Rwy Idg	8994
123°	TDZE	4443
	Apt Elev	4473

RNAV (RNP) Z RWY 12

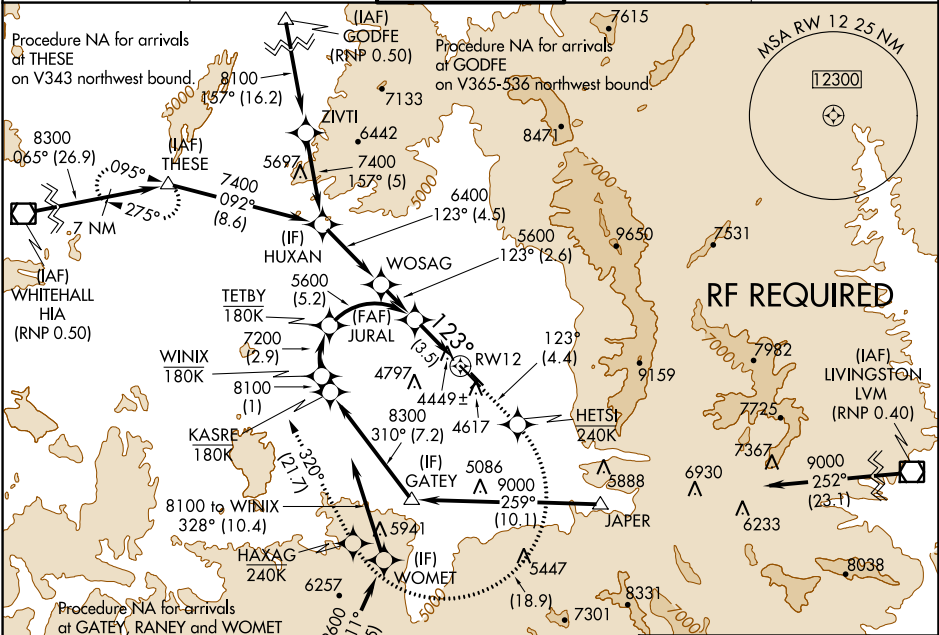
BOZEMAN YELLOWSTONE INTL (BZN)

GPS required. For uncompensated Baro-VNAV systems, procedure NA below -23°C (-11°F) or above 49°C (121°F). When VGSI inop, procedure NA at night. For inoperative MALSR increase RNP 0.30 visibility to 1½ all Cats.

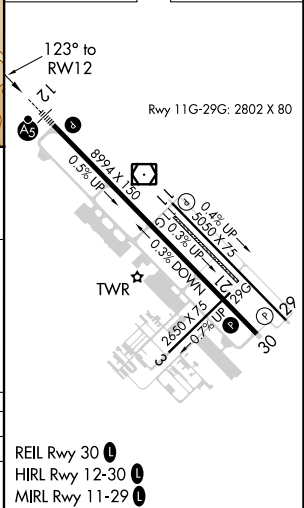
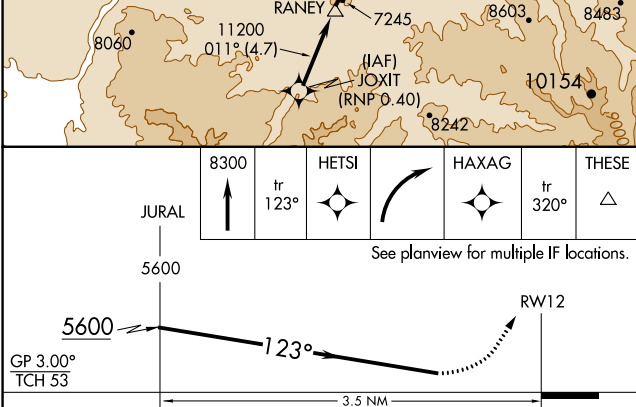
MALSR

MISSED APPROACH: Climb to 8300 on track 123° to HETSI, and right turn to HAXAG, and on track 320° to THESE and hold.

ATIS 135.425	BIG SKY APP CON ★ 118.975 226.675	BOZEMAN TOWER ★ 118.2 (CTAF) 0	GND CON 121.8	UNICOM 122.95
------------------------	---	--	-------------------------	-------------------------



ELEV 4473	TDZE 4443
-----------	-----------



CATEGORY	A	B	C	D
RNP 0.30 DA		4791-1	348(400-1)	

AUTHORIZATION REQUIRED

NW-1, 03 DEC 2020 to 31 DEC 2020

NW-1, 03 DEC 2020 to 31 DEC 2020