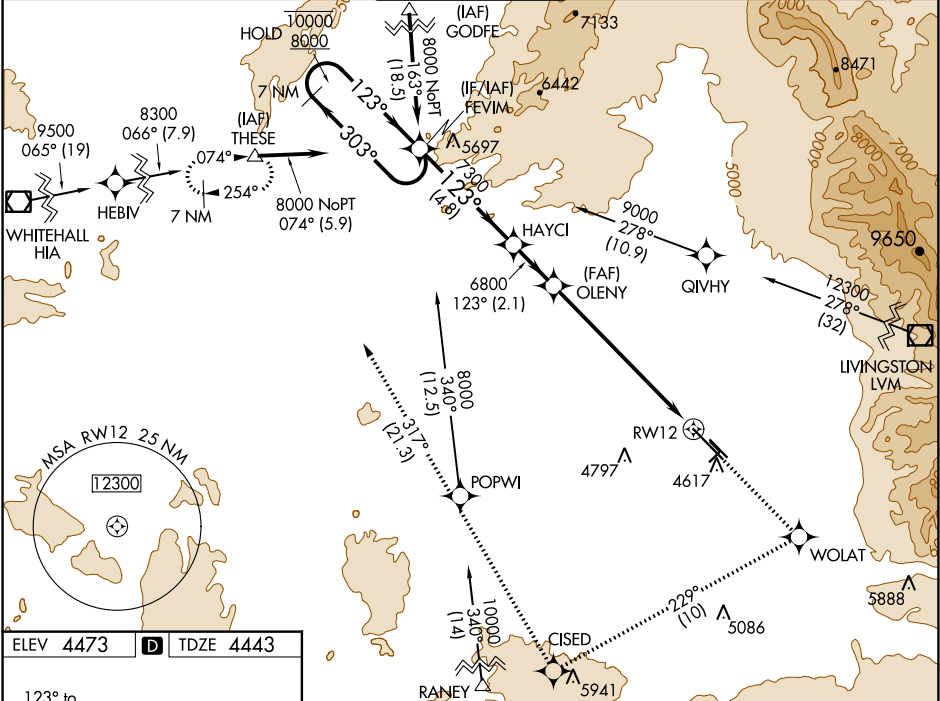


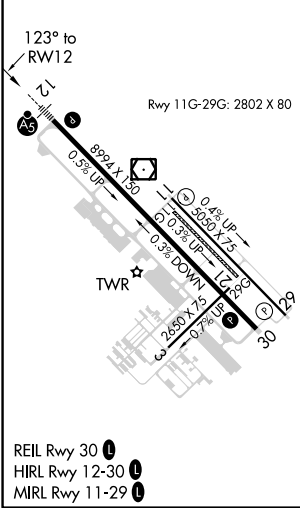
WAAS CH 72816 W12A	APP CRS 123°	Rwy Idg TDZE Apt Elev	8994 4443 4473
--	------------------------	-----------------------------	---

RNAV (GPS) Y RWY 12
BOZEMAN YELLOWSTONE INTL (BZN)

RNP APCH.			MALSR	MISSED APPROACH: Climb to 8300 direct WOLAT and right turn on track 229° to CISED and on track 317° to THESE and hold.
Circling NA to Rws 3-21 and 11-29. For uncompensated Baro-VNAV systems, procedure NA below -23°C or above 49°C. For inop ALS, increase -31°C LNAV/VNAV visibility to 1½ SM and LNAV visibility Cats C and D to 1½ SM.			AS	
ATIS 135.425	BIG SKY APP CON ★ 118.975 226.675	BOZEMAN TOWER ★ 118.2 (CTAF) 0	GND CON 121.8	UNICOM 122.95



ELEV 4473	D	TDZE 4443
-----------	---	-----------



7 NM Holding Pattern		8300	WOLAT	CISED	THESE
10000 ← 303°		↑	↻ tr 229°	↻ tr 317°	△
8000 → 123°		HAYCI	OLENY	* LNAV only	
GP 3.00°		6800	6800	* 1.5 NM to RW12	
TCH 53		4.8 NM	2.1 NM	5.7 NM	1.5 NM
CATEGORY	A	B	C	D	
LPV DA	4693-½		250 (300-½)		
LNAV/VNAV DA	5094-1¾		651 (700-1¾)		
LNAV MDA	4960-½	517 (500-½)	4960-1	517 (500-1)	4960-1¼
CIRCLING	4960-1	487 (500-1)	5160-2	5360-3	887 (900-3)

NW-1, 03 DEC 2020 to 31 DEC 2020

NW-1, 03 DEC 2020 to 31 DEC 2020