


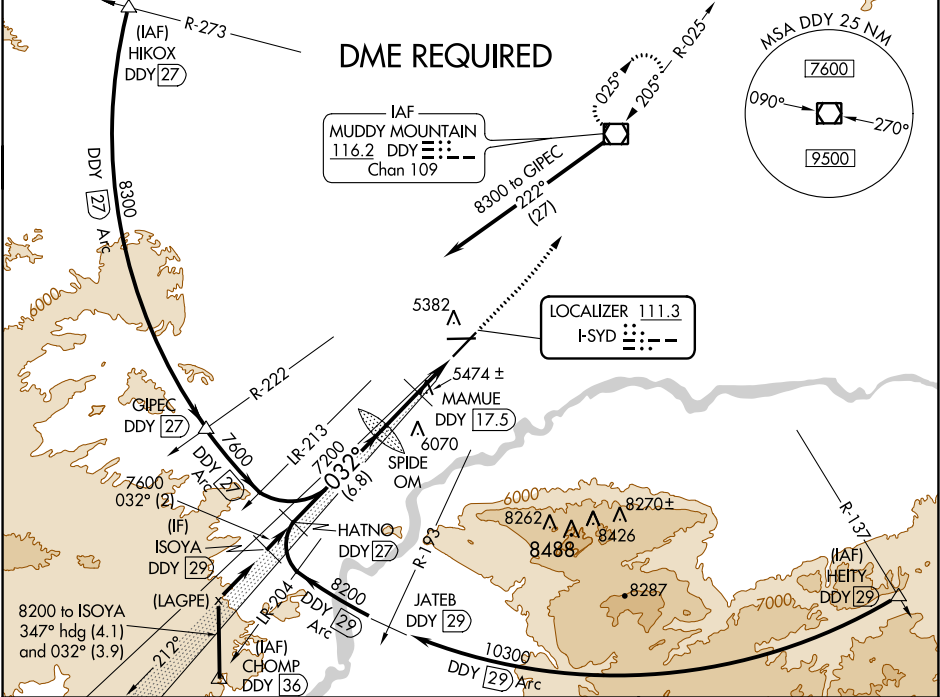
LOC I-SYD 111.3	APP CRS 032°	Rwy ldg 10165 TDZE 5328 Apt Elev 5344
---------------------------	------------------------	--

ILS or LOC RWY 3
CASPER/NATRONA COUNTY INTL (CPR)

⚠ DME from DDY VOR/DME. Simultaneous reception of I-SYD and DDY DME required. When local altimeter setting not received, use Douglas altimeter setting; increase DA to 5697 feet and all MDAs 180 feet, increase S-ILS visibility all Cats ¼ mile and S-LOC visibility Cats B, C, and D ½ mile, increase Circling visibility Cats B, C, and D ½ mile. For inoperative MALSRS when using Douglas altimeter setting increase S-ILS visibility all Cats to 1 ¼ mile. **MAMUE FIX MINIMUMS:** For inoperative MALSRS, increase S-LOC visibility Cats C, and D to 1 ½ mile.
#RVR 1800 authorized with use of FD or AP or HUD to DA.

MALSRS

MISSED APPROACH:
Climb to 7500
then left turn direct
DDY VOR/DME
and hold.

ATIS 126.15	CASPER APP CON ★ 120.65 354.1	CASPER TOWER ★ 118.3 (CTAF) 0 257.8	GND CON 121.9	CLNC DEL 121.9 257.8	UNICOM 122.95
-----------------------	---	---	-------------------------	--------------------------------	-------------------------



ISOYA DDY 29	*6400 when using Douglas altimeter setting.	SPIDE OM	MAMUE DDY 17.5	DDY	ELEV 5344	TDZE 5328
8200	032°	7183	7200	*6220		
GS 3.00°						
TCH 50						
	2 NM	6.8 NM	2.9 NM	2.7 NM		
CATEGORY	A	B	C	D		
S-ILS 3	#5528/24 200 (200-½)					
S-LOC 3	6220/40	892 (900-¾)	6220-2	892 (900-2)		
CIRCLING	6220-1¼	876 (900-1¼)	6220-2½	876 (900-2½)		
	MAMUE FIX MINIMUMS					
S-LOC 3	5740/24	412 (400-½)	5740/40	412 (400-¾)		
CIRCLING	5740-1	5800-1	5800-½	5900-2		
	396 (400-1)	456 (500-1)	456 (500-1½)	556 (600-2)		

