



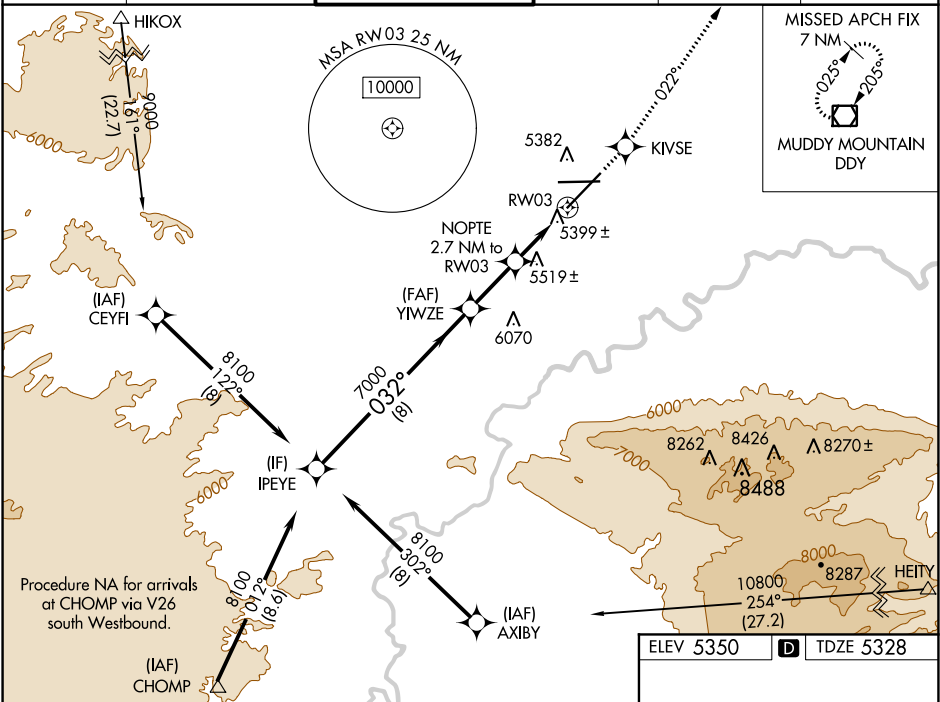
WAAS CH 73006 W03A	APP CRS 032°	Rwy Idg 10165 TDZE 5328 Apt Elev 5350
--	------------------------	--

RNAV (GPS) RWY 3

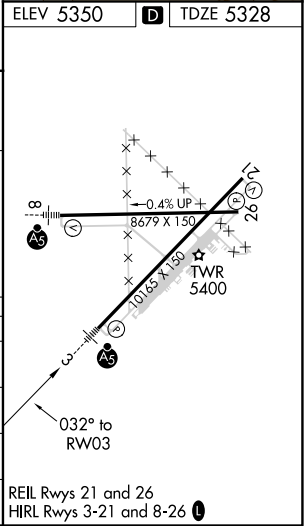
CASPER/NATRONA COUNTY INTL (CPR)

 For inoperative MALSR, increase LPV all Cats visibility to 1 mile. For uncompensated Baro-VNAV systems, LNAV/VNAV NA below -25°C (-13°F) or above 38°C (100°F). DME/DME RNP-0.3 NA.	MALSR 	MISSED APPROACH: Climb to 7500 direct KIVSE and via track 022° to DDY VOR/DME and hold.
--	---	--

ATIS 126.15	CASPER APP CON * 120.65 354.1	CASPER TOWER * 118.3 (CTAF) 0 257.8	GND CON 121.9	CLNC DEL 121.9 257.8	UNICOM 122.95
------------------------------	--	--	--------------------------------	---------------------------------------	--------------------------------



Procedure Turn NA GP 3.00° TCH 52	IPEYE		YIWZE		NOPT 2.7 NM to RW03		7500 ↑		KIVSE ✦		tr 022° ↗		DDY ◻		
	8100		032°		7000		*6240		*1.3 NM to RW03		RW03		*LNAV only		
	8 NM		2.3 NM		1.4 NM		1.3 NM								
	CATEGORY		A		B		C		D						
LPV	DA	5643/24 315 (300-½)													
LNAV/ VNAV	DA	5691/40 363 (400-¾)													
LNAV MDA		5780/24 452 (500-½)				5780/40 452 (500-¾)				5780/50 452 (500-1)					
CIRCLING		5780-1 430 (500-1)		5800-1 450 (500-1)		5800-1½ 450 (500-1½)		5900-2 550 (600-2)							



NW-1, 03 DEC 2020 to 31 DEC 2020

NW-1, 03 DEC 2020 to 31 DEC 2020