

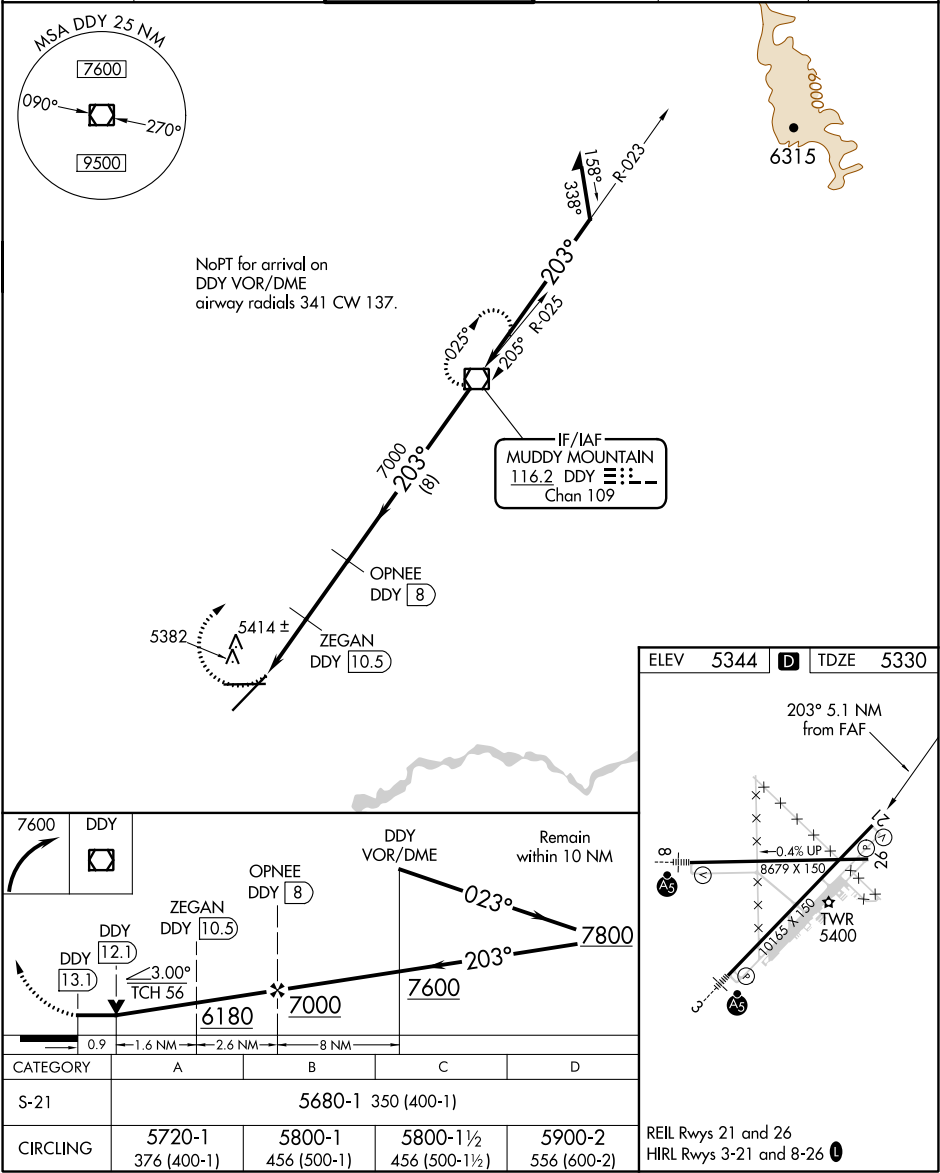
VOR/DME DDY	APP CRS	Rwy Idg	10165
116.2	203°	TDZE	5330
Chan 109		Apt Elev	5344

# VOR/DME RWY 21

CASPER/NATRONA COUNTY INTL (CPR)

<p><b>V</b> VDP NA with Douglas altimeter setting. When local altimeter setting not received, use Douglas altimeter setting: Increase all MDAs 180 feet and S-21 visibility Cats C and D ½ mile, Circling visibility Cats C and D ¼ mile.</p> <p><b>A</b></p>	<p>MISSED APPROACH: Climbing right turn to 7600 direct DDY VOR/DME and hold.</p>
---	--

ATIS 126.15	CASPER APP CON ★ 120.65 354.1	CASPER TOWER ★ 118.3 (CTAF) 257.8	GND CON 121.9	CLNC DEL 121.9 257.8	UNICOM 122.95
----------------	----------------------------------	--------------------------------------	------------------	-------------------------	------------------



NW-1, 03 DEC 2020 to 31 DEC 2020

NW-1, 03 DEC 2020 to 31 DEC 2020