

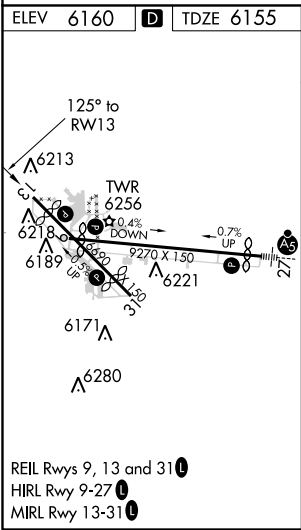
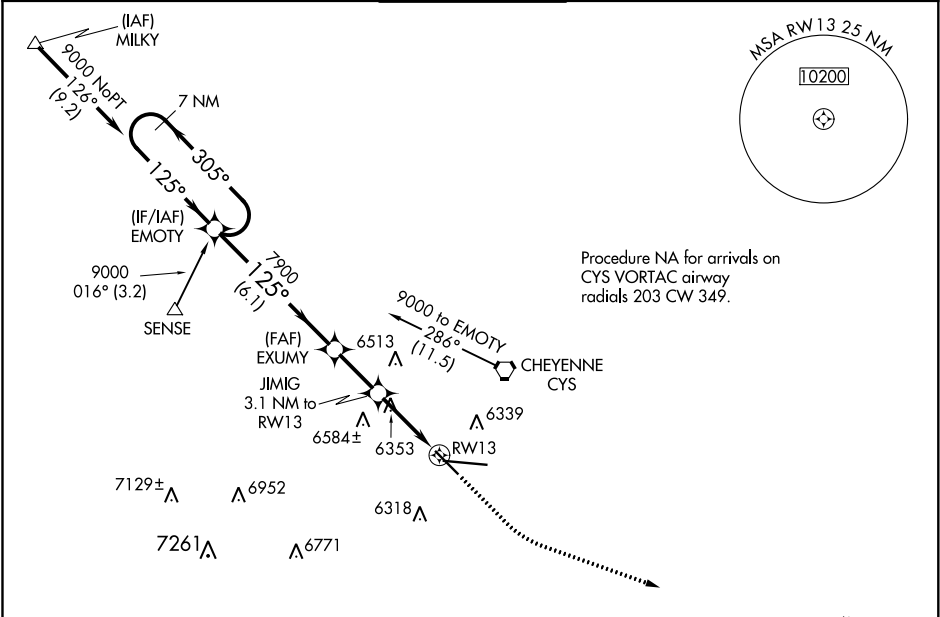
WAAS CH <b>56609</b> <b>W13A</b>	APP CRS <b>125°</b>	Rwy Idg TDZE Apt Elev	<b>4830</b> <b>6155</b> <b>6160</b>
--	------------------------	-----------------------------	---

RNAV (GPS) RWY 13

CHEYENNE RGNL/JERRY OLSON FIELD (CYS)

RNP APCH.	For uncompensated Baro-VNAV systems, LNAV/VNAV NA below -24°C or above 45°C. Rwy 13 helicopter visibility reduction below ¾ SM NA.	MISSED APPROACH: Climb to 6600, then climbing left turn to 8500 direct HAMER and hold.
ASR/PAR		

ATIS <b>134.425 278.3</b>	CHEYENNE APP CON★ <b>124.55 263.075</b>	CHEYENNE TOWER★ <b>118.7(CTAF) 0 257.8</b>	GND CON <b>121.9 254.275</b>	UNICOM <b>122.95</b>
------------------------------	--	---	---------------------------------	-------------------------



A7002				
CATEGORY	A	B	C	D
LPV DA	6405-3/4 250 (300-3/4)			
LNAV/VNAV DA	6419-7/8 264 (300-7/8)			
LNAV MDA	6620-1 465 (500-1)	6620-1 3/8 465 (500-1 3/8)		
CIRCLING	6640-1 480 (500-1)	6900-2 740 (800-2)	6920-2 1/2 760 (800-2 1/2)	