

WAAS CH 70307 W27A	APP CRS 265°	Rwy Idg TDZE 6121 Apt Elev 6160
--	------------------------	---

RNAV (GPS) RWY 27
CHEYENNE RGNL/JERRY OLSON FIELD (CYS)

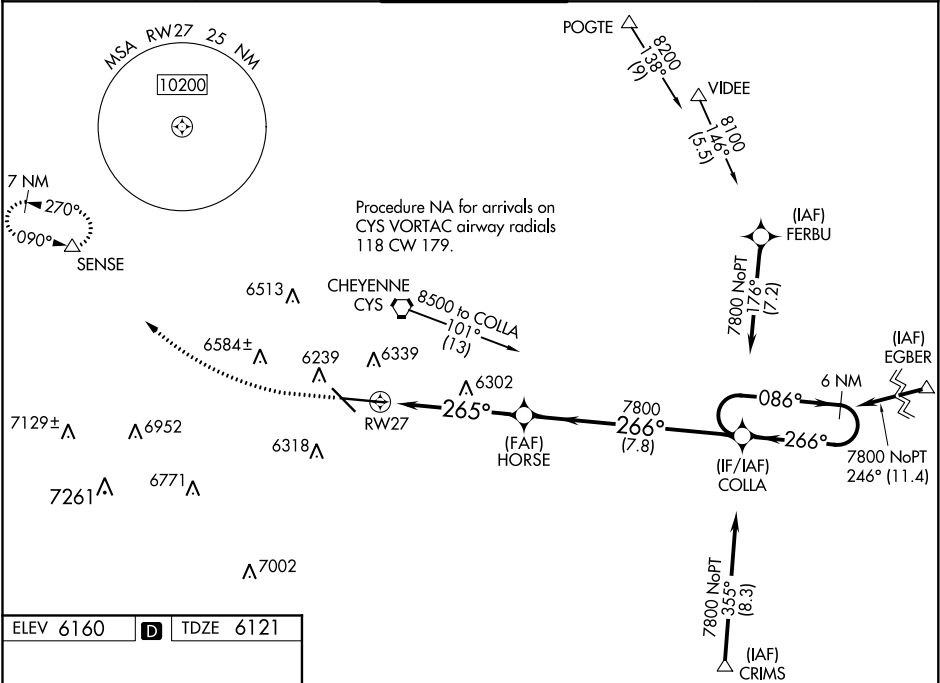
RNP APCH.

For uncompensated Baro-VNAV systems, LNAV/VNAV NA below -24°C or above 45°C. For inop ALS, increase LNAV/VNAV all Cts visibility to RVR 4000.
RVR 1800 authorized with use of FD or AP or HUD to DA.

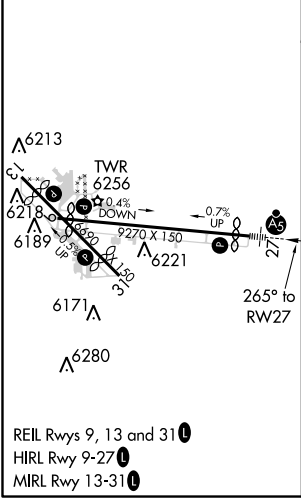





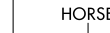

MISSED APPROACH: Climb to 6600, then climbing right turn to 10400 direct SENSE and hold, continue climb-in-hold to 10400.

ATIS 134.425 278.3	CHEYENNE APP CON★ 124.55 263.075	CHEYENNE TOWER★ 118.7(CTAF) 0 257.8	GND CON 121.9 254.275	UNICOM 122.95
------------------------------	--	---	---------------------------------	-------------------------



ELEV 6160	D	TDZE 6121
-----------	----------	-----------



6600		10400		SENSE											
*LNAV only		*1.3 NM to RW27		HORSE		COLLA		6 NM Holding Pattern							
				7800		7800		086°		266°		7800		GP 3.00° TCH 55	
		RW27		265°		7800		266°		266°		7800			
		1.3		3.9 NM		7.8 NM									
CATEGORY		A		B		C		D							
LPV DA#		6321/24		200 (200-½)											
LNAV/VNAV DA		6376/24		255 (300-½)											
LNAV MDA		6560/24		439 (400-½)		6560/40		439 (400-¾)							
CIRCLING		6640-1		480 (500-1)		6900-2 740 (800-2)		6920-2½ 760 (800-2½)							

NW-1, 03 DEC 2020 to 31 DEC 2020

NW-1, 03 DEC 2020 to 31 DEC 2020