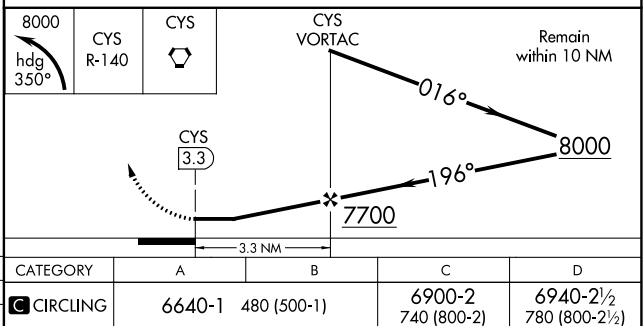
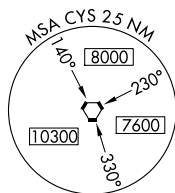
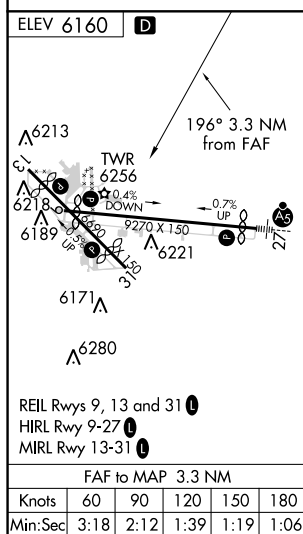
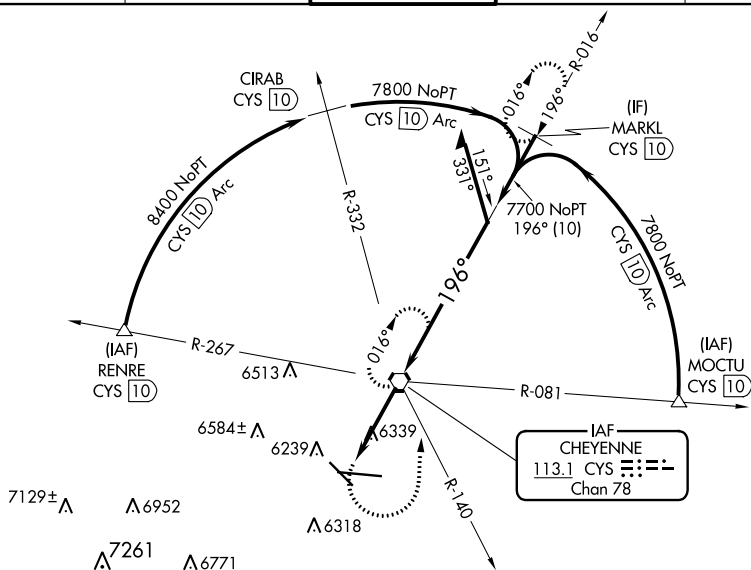


VOR or TACAN-A
CHEYENNE RGNL/JERRY OLSON FIELD (CYS)

MISSED APPROACH: Climbing left turn to 8000 on heading 350° and on CYS VORTAC R-140 to CYS VORTAC and hold, continue climb-in-hold to 8000 (TACAN aircraft continue on CYS VORTAC R-016 to MARKL/10 DME and hold north, right turn, 196° inbound.)

ATIS	CHEYENNE APP CON*	CHEYENNE TOWER *	GND CON	UNICOM
134.425 278.3	124.55 263.075	118.7(CTAF) 0 257.8	121.9 254.275	122.95



NW-1, 03 DEC 2020 to 31 DEC 2020