

DILLON, MONTANA

AL-121 (FAA)

17341

WAAS CH 93927 W17A	APP CRS 166°	Rwy Idg TDZE Apt Elev	6501 5202 5245
--	------------------------	-----------------------------	---

APP CR
166°

Rwy Idg	6501
TDZE	5202
Apt Elev	5245

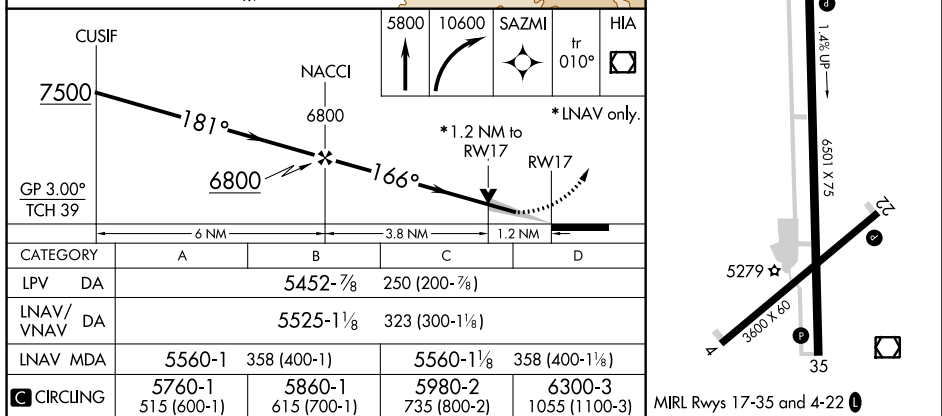
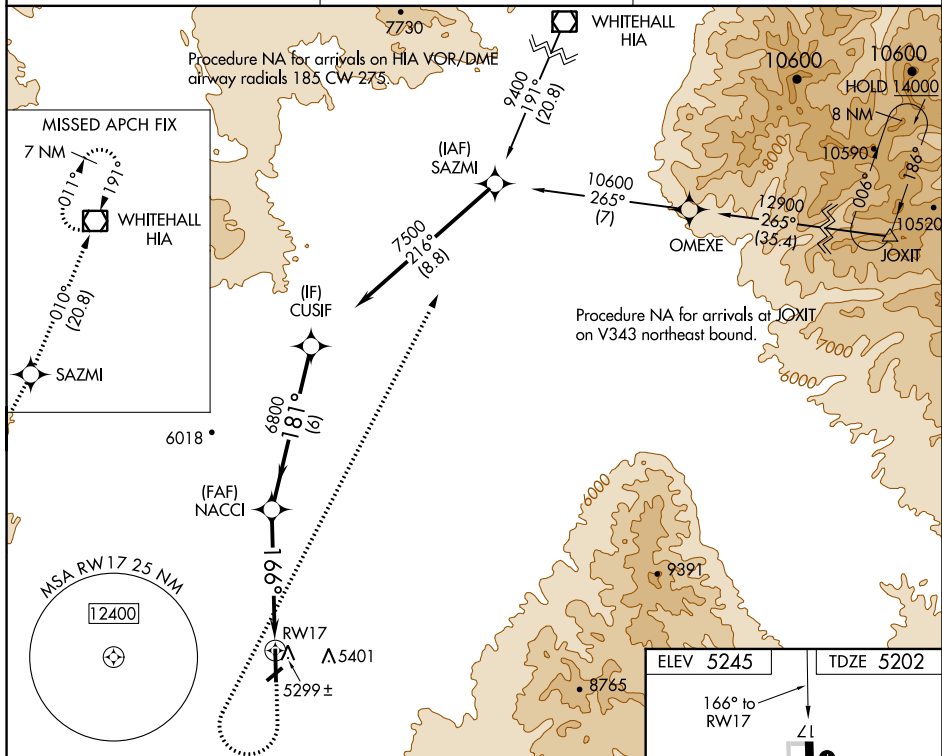
RNAV (GPS) RWY 17
DILLON (DLN)

T When local altimeter setting not received, procedure NA.
A DME/DME RNP-0.3 NA. For uncompensated Baro-VNAV systems, LNAV/VNAV NA below -27°C (-16°F) or above 51°C (124°F).
 Night Landing: Rwy 4, 22, 35 NA.

MISSED APPROACH: Climb to 5800 then climbing right turn to 10600 direct SAZMI and on track 010° to HIA VOR/DME and hold.

ASOS
135.225

SALT LAKE CENTER
132.4 338.3

UNICOM
122.8 (CTAF) **L**

DILLON, MONTANA
Amdt 1B 28APR16

45°15'N-112°33'W

DILLON (DLN)
RNAV (GPS) RWY 17

NW-1, 03 DEC 2020 to 31 DEC 2020