

WAAS CH <b>50208</b> <b>W03A</b>	APP CRS <b>027°</b>	Rwy Idg <b>5500</b> TDZE <b>1269</b> Apt Elev <b>1276</b>
----------------------------------------	------------------------	-----------------------------------------------------------------

RNAV (GPS) RWY 3

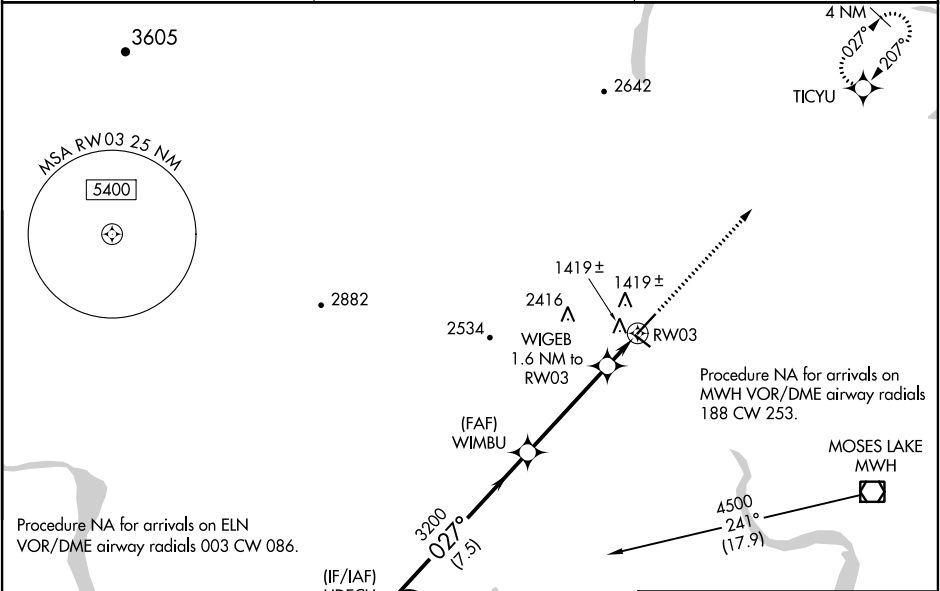
EPHRATA MUNI (EPH)

RNP APCH.

For uncompensated Baro-VNAV systems, LNAV/VNAV NA below -17°C or above 46°C. VDP and Baro-VNAV NA when using Moses Lake/Grant County Intl altimeter setting. When local altimeter setting not received, use Moses Lake/Grant County Intl altimeter setting and increase all DA/MDA 40 feet and LNAV Cat C and D visibility ½ SM.

MISSED APPROACH: Climb to 3800 direct TICYU and hold.

ASOS <b>135.775</b>	GRANT COUNTY APP CON * <b>126.4 379.95</b>	UNICOM <b>122.8 (CTAF) 0</b>
------------------------	-----------------------------------------------	---------------------------------



ELEV 1276

TDZE 1269

5 NM Holding Pattern	UDUCU	WIMBU	WIGEB 1.6 NM to RWY 03	3800	TICYU
4500	207°	027°	027°	3200	1820
GP 3.00°	TCH 60	7.5 NM	4.2 NM	0.6	1 NM

REIL Rwy 3, 11, 21 and 29

MIRL Rwy 11-29 and 3-21