

APP CRS <b>164°</b>	Rwy Idg TDZE Apt Elev	<b>8009</b> <b>364</b> <b>374</b>
------------------------	-----------------------------	---

**RNAV (RNP) Z RWY 16R**  
MAHLON SWEET FIELD (EUG)

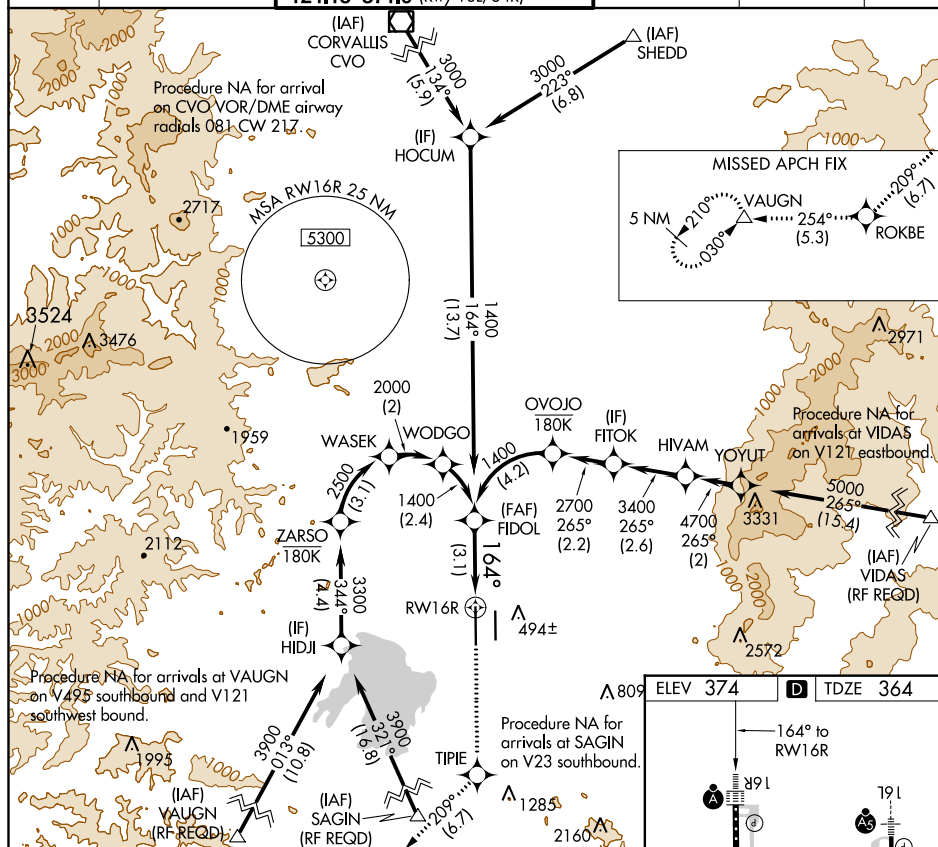
RNP AR APCH.

**T** For uncompensated Baro-VNAV systems, procedure NA below -9°C or above 54°C. Simultaneous approach authorized. For inop ALS, increase RNP 0.17 all Cats visibility to RVR 4000 and RNP 0.30 all Cats visibility to RVR 5500.

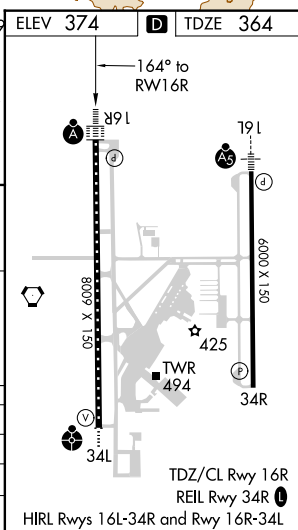
ALSF-

**MISSED APPROACH:** Climb to 5000 direct TIPIE, and on track 209° to ROKBE, and track 254° to VAUGN and hold, continue climb-in-hold to 5000.

ATIS <b>125.225</b>	CASCADE APP CON★ <b>119.6 348.7</b>	EUGENE TOWER★ <b>118.9 (CTAF) 0 371.9 (Rwy 16R/34L) 124.15 371.9 (Rwy 16L/34R)</b>	GND CON <b>121.7 269.5</b>	CLNC DEL <b>121.7 269.5</b>	UNICOM <b>122.95</b>
------------------------	--	---	-------------------------------	--------------------------------	-------------------------



		5000 ↑	TIPI ⬠	tr 209°	ROKBE ⬠	tr 254°	VAUGHN △
GP 3.00° TCH 51							
CATEGORY	A	B	C	D			
RNP 0.17 DA	614/24 250 (300-½)						
RNP 0.30 DA	711/30 347 (400-¾)						
<b>AUTHORIZATION REQUIRED</b>							



NW-1, 03 DEC 2020 to 31 DEC 2020