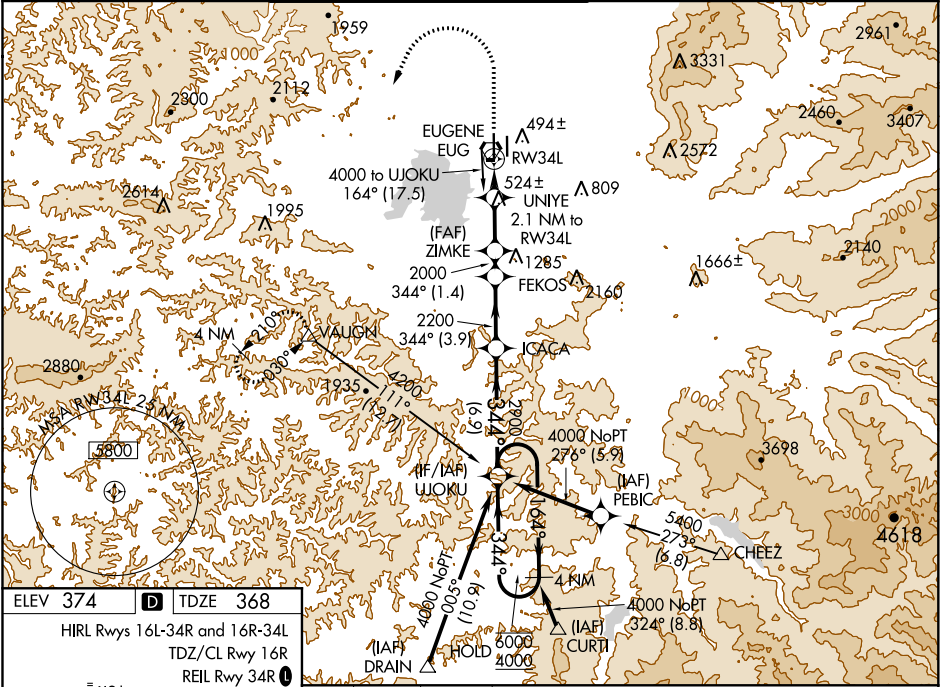


WAAS CH <b>45600</b> <b>W34A</b>	APP CRS <b>344°</b>	Rwy Idg TDZE Apt Elev	<b>8009</b> <b>368</b> <b>374</b>
--	------------------------	-----------------------------	---

RNAV (GPS) Y RWY 34L  
MAHLON SWEET FIELD (EUG)

RNP APCH.	Simultaneous approach authorized. LNAV procedure NA during simultaneous operations. Use of FD or AP providing RNAV track guidance required during simultaneous operations. For uncompensated Baro-VNAV systems, LNAV/VNAV NA below -10°C or above 54°C. For inop ALS increase LNAV/VNAV visibility Cats A-B to RVR 4500. Inop table does not apply to LPV minimums.	ODALS MISSED APPROACH: Climb to 1500, then climbing left turn to 4000 direct VAUGHN and hold.
-----------	---	--

ATIS <b>125.225</b>	CASCADE APP CON★ <b>119.6 348.7</b>	EUGENE TOWER★ <b>118.9</b> (CTAF) <b>0 371.9</b> (Rwy 16R/34L) <b>124.15 371.9</b> (Rwy 16L/34R)	GND CON <b>121.7 269.5</b>	CLNC DEL <b>121.7 269.5</b>	UNICOM <b>122.95</b>
------------------------	--	--	-------------------------------	--------------------------------	-------------------------



ELEV 374	TDZE 368
HIRL Rwy 16L-34R and 16R-34L	TDZ/CL Rwy 16R
REIL Rwy 34R	
1500	4000
VAUGHN	UJOKU
ZIMKE	FEKOS
ICACA	UNIYE
1.1 NM to RW34L	2.1 NM to RW34L
1080*	2000
1.1 NM	1 NM
2.9 NM	1.4 NM
3.9 NM	6.9 NM
CATEGORY	A B C D
LPV DA	568/40 200 (200-¾)
LNAV/VNAV DA	657/40 289 (300-¾)
LNAV MDA	760/40 392 (400-¾) 760/50 392 (400-1)
CIRCLING	820-1 446 (500-1) 840-1 466 (500-1) 1000-1¾ 626 (700-1¾) 1140-2½ 766 (800-2½)

NW-1, 03 DEC 2020 to 31 DEC 2020

NW-1, 03 DEC 2020 to 31 DEC 2020