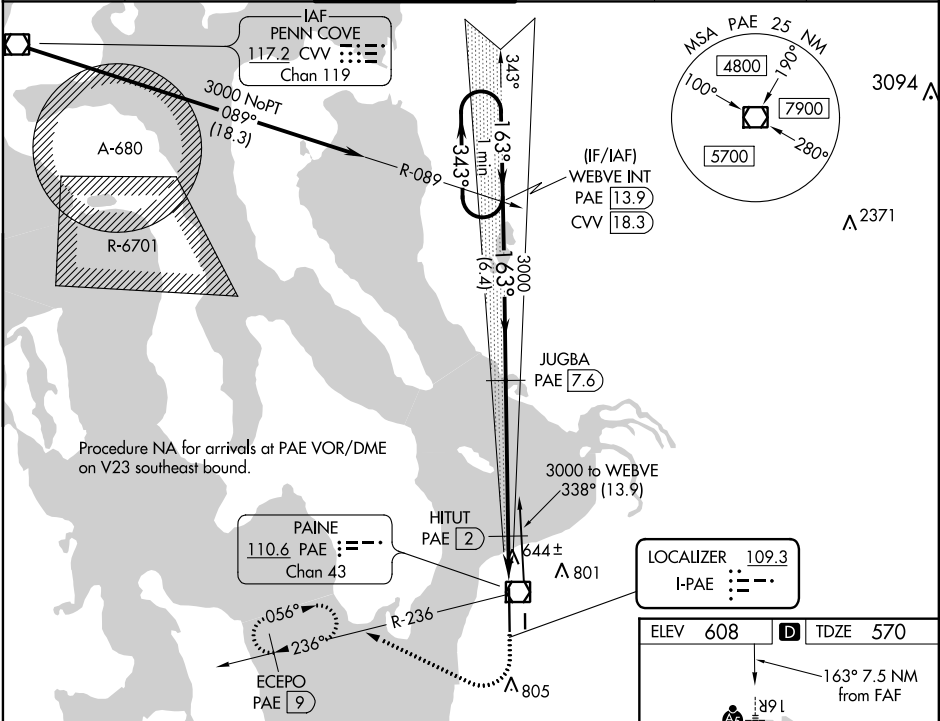


LOC I-PAE 109.3	APP CRS 163°	Rwy Idg TDZE Apt Elev	9010 570 608
---------------------------	------------------------	-----------------------------	---

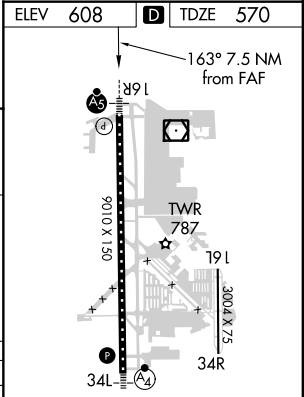
ILS Z or LOC Z RWY 16R
SNOHOMISH COUNTY (PAINE FIELD) (P.A.E.)

⚠ Circling Rwy 34R NA at night. DME required. For inop ALS, increase S-LOC 16R Cats C/D visibility to RVR 5500. DME from PAE VOR/DME. Simultaneous reception of I-PAE and PAE DME required.	MALSR A5	MISSED APPROACH: Climb to 1100 then climbing right turn to 3000 on heading 280° and PAE VOR/DME R-236 to ECEPO/PAE 9 DME and hold, continue climb-in-hold to 3000.
--	---------------------------	---

ATIS 128.65	SEATTLE APP CON 128.5 306.9	PAINE TOWER ★ 132.95 (CTAF) 0 256.7	GND CON 121.8 339.8	CLNC DEL 127.175	UNICOM 122.95
-----------------------	---------------------------------------	---	-------------------------------	----------------------------	-------------------------



VGSI and ILS glidepath not coincident (VGSI Angle 3.00/TCH 74).			
One Minute Holding Pattern			
WEBVE INT PAE 13.9			
JUGBA PAE 7.6			
HITUT PAE 2			
*LOC only			
3000 ← 343° 163° → 3000			
GS 3.00° TCH 57			
*1220			
6.4 NM 5.6 NM 1.9 NM			
CATEGORY	A	B	C
S-ILS 16R	770/18 200 (200-½)		
S-LOC 16R	940/24 370 (400-½)		
CIRCLING	1100-1 492 (500-1)		
	1120-1½ 512 (600-1½)		
	1160-2 552 (600-2)		



NW-1, 03 DEC 2020 to 31 DEC 2020

NW-1, 03 DEC 2020 to 31 DEC 2020