

WAAS CH <b>61129</b> <b>W16A</b>	APP CRS <b>163°</b>	Rwy Idg TDZE Apt Elev	<b>9010</b> <b>570</b> <b>608</b>
--	------------------------	-----------------------------	---

RNAV (GPS) Z RWY 16R

SNOHOMISH COUNTY (PAINE FIELD) (PAE)

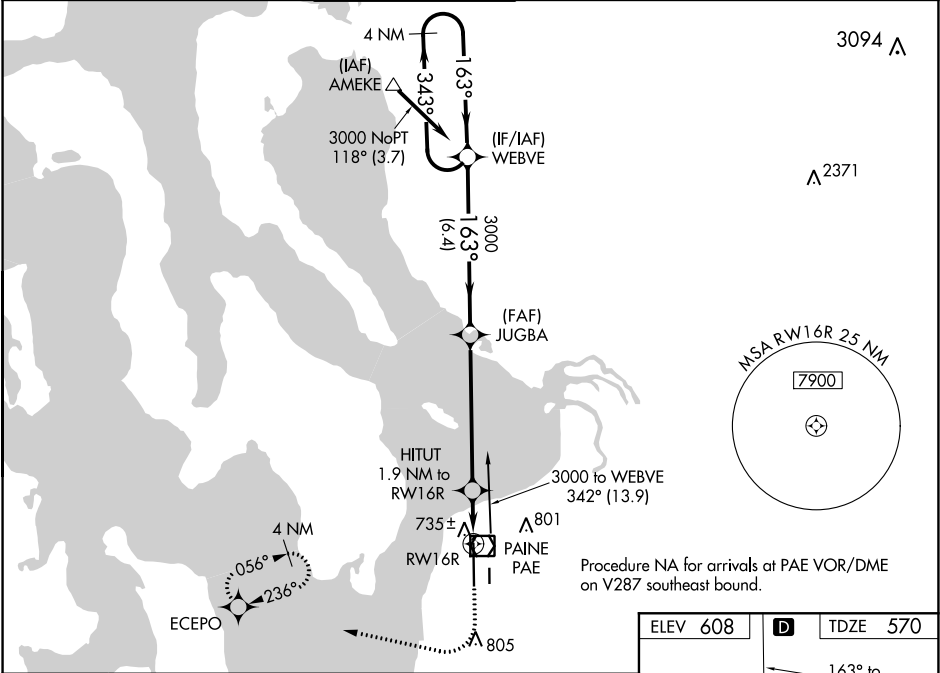
▼

For uncompensated Baro-VNAV systems, LNAV/VNAV NA below -5°C (23°F) or above 54°C (130°F). Circling Rwy 34R NA at night. DME/DME RNP-0.3 NA.

MALSR

MISSED APPROACH: (Do not exceed 240K until ECEPO) Climb to 1100 then climbing right turn to 3000 direct ECEPO and hold, continue climb-in-hold to 3000.

ATIS <b>128.65</b>	SEATTLE APP CON <b>128.5 306.9</b>	PAINE TOWER ★ <b>132.95 (CTAF) 0 256.7</b>	GND CON <b>121.8 339.8</b>	CLNC DEL <b>127.175</b>	UNICOM <b>122.95</b>
-----------------------	---------------------------------------	---	-------------------------------	----------------------------	-------------------------



VGSI and RNAV glidepath not coincident (VGSI Angle 3.00/TCH 74).				
CATEGORY	A	B	C	D
LPV DA	770/18 200 (200-½)			
LNAV/VNAV DA	913/30 343 (400-⅝)			
LNAV MDA	1000/24 430 (400-½)	1000/40 430 (400-¾)		
CIRCLING	1100-1 492 (500-1)	1120-1½ 512 (600-1½)	1160-2 552 (600-2)	

