

| | | | |
|-------------|---------|----------|------|
| VOR/DME FBR | APP CRS | Rwy Idg | 6404 |
| 108.6 | 215° | TDZE | 7018 |
| Chan 23 | | Apt Elev | 7038 |

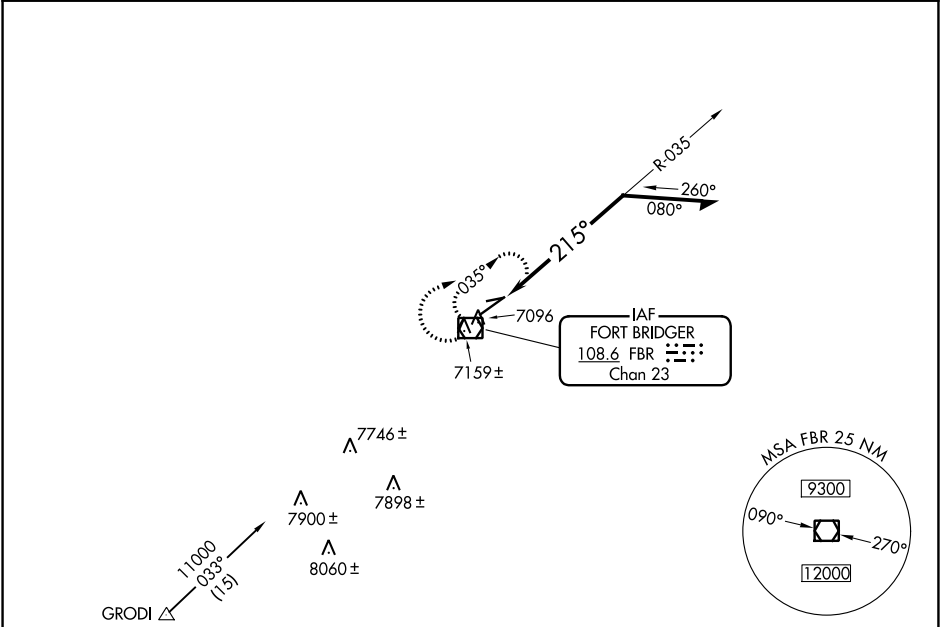
VOR RWY 22
FORT BRIDGER (FBR)

NA

Circling NA to Rwys 7 and 25. When local altimeter setting not received, use Evanston altimeter setting and increase all MDAs 100 feet, increase S-22 Cats C and D and Circling Cat C visibility ¼ SM, and Circling Cat D visibility ½ SM.

MISSED APPROACH:
Climbing right turn to 9000 in FBR VOR/DME holding pattern.

| | | |
|-------------------|----------------------------------|--------------------------|
| AWOS-3PT 118.8 | SALT LAKE CENTER 124.35 353.5 | UNICOM 122.8 (CTAF) 0 |
|-------------------|----------------------------------|--------------------------|



9000

FBR

FBR VOR/DME

8900

035°

215°

8500

Remain within 10 NM

| CATEGORY | A | B | C | D |
|----------|-----------------------|-----------------------|---------------------------|-----------------------|
| S-22 | 7440-1 | 422 (500-1) | 7440-1 ¼ | 422 (500-1 ¼) |
| CIRCLING | 7480-1 442 (500-1) | 7500-1 462 (500-1) | 7660-1 ¾ 622 (700-1 ¾) | 7680-2 642 (700-2) |

ELEV 7038

TDZE 7018

215° to VOR/DME

7099±

7077±

3520 X 50

0.3% UP

6404 X 75

0.5% UP

REIL Rwys 4 and 22 0

MIRL Rwy 4-22 0

NW-1, 03 DEC 2020 to 31 DEC 2020

NW-1, 03 DEC 2020 to 31 DEC 2020