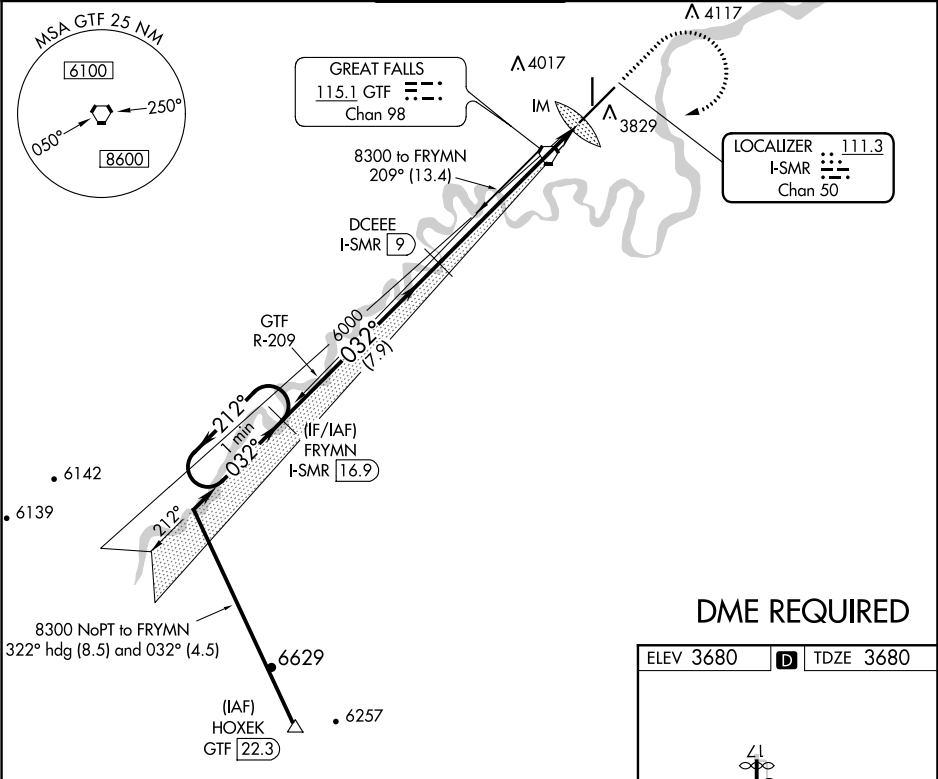


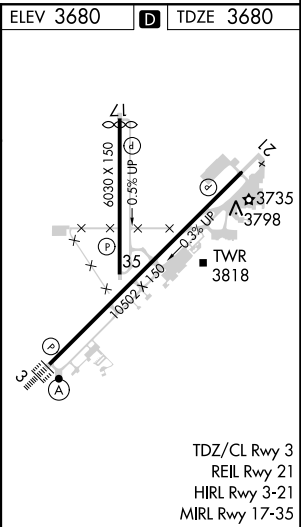
LOC/DME I-SMR 111.3 Chan 50	APP CRS 032°	Rwy Idg 10502 TDZE 3680 Apt Elev 3680	ILS RWY 3 (CAT II & III) GREAT FALLS INTL (GTF)	
--	------------------------	--	--	--


<div><div><div>⚠</div><div>⚠</div></div><div>CAT II: RVR 1000 authorized with specific OPSPEC, MSPEC, or LOA approval and use of autoland or HUD to touchdown. DME required.</div></div>	<div>ALSIF-2</div> <div><div><div></div><div></div><div></div></div></div>	MISSED APPROACH: Climb to 5000 then climbing right turn to 8300 direct GTF VORTAC then on GTF VORTAC R-209 to FRYMN/I-SMR 16.9 DME and hold.
--	--	--

ATIS 126.6 269.0	GREAT FALLS APP CON 128.6 379.175	GREAT FALLS TOWER 118.7 282.2	GND CON 121.7 348.6	CLNC DEL 121.7 348.6
----------------------------	---	---	-------------------------------	--------------------------------



DME REQUIRED



VGSI and ILS glidepath not coincident (VGSI Angle 3.00/TCH 70).					5000 ↑		8300 ↗		GTF 		GTF R-209		FRYMN I-SMR 16.9	
One Minute Holding Pattern					DCEEE I-SMR 9		Use I-SMR DME when on the localizer course.							
8300 ← 212°					032° →		032°		6000		IM		3780	
GS 3.00° TCH 54					6000									
					7.9 NM		7.1 NM				1099°			
CATEGORY					A		B		C				D	
S-ILS 3					CAT II		RA 96/12		100		DA 3780			
S-ILS 3					CAT III		RVR 06							
CATEGORY II & III ILS - SPECIAL AIRCREW & AIRCRAFT CERTIFICATION REQUIRED														