

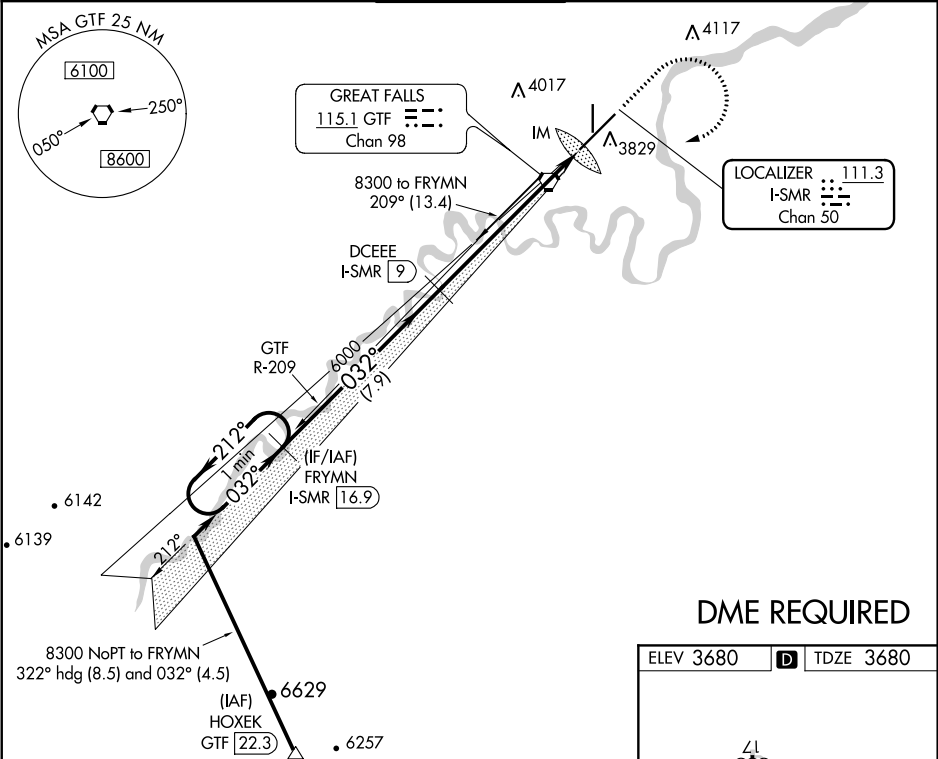
LOC/DME I-SMR <b>111.3</b> Chan 50	APP CRS <b>032°</b>	Rwy Idg TDZE <b>3680</b> Apt Elev <b>3680</b>	<b>ILS RWY 3 (SA CAT I)</b> GREAT FALLS INTL (GTF)
--	------------------------	---	---

Requires specific OPSPEC, MSPEC, or LOA approval and use of HUD to DH. DME required.

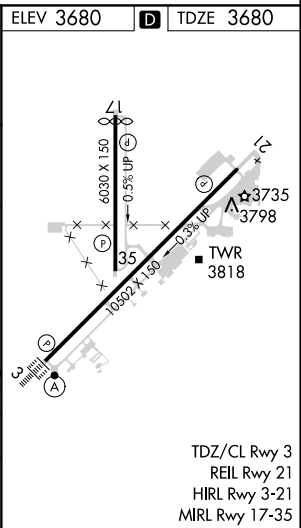
ALSF-2

MISSED APPROACH: Climb to 5000 then climbing right turn to 8300 direct GTF VORTAC then on GTF VORTAC R-209 to FRYMNI/I-SMR 16.9 DME and hold.

ATIS <b>126.6 269.0</b>	GREAT FALLS APP CON <b>128.6 379.175</b>	GREAT FALLS TOWER <b>118.7 282.2</b>	GND CON <b>121.7 348.6</b>	CLNC DEL <b>121.7 348.6</b>
----------------------------	---	---	-------------------------------	--------------------------------



DME REQUIRED



VGSI and ILS glidepath not coincident (VGSI Angle 3.00/TCH 70).  
One Minute Holding Pattern FRYMNI I-SMR 16.9

5000 8300 GTF GTF FRYMNI

DCEEE I-SMR 9 Use I-SMR DME when on the localizer course.

8300 212° 032° 032° 6000 6000 IM

GS 3.00° TCH 54

7.9 NM 7.1 NM 109'

CATEGORY	A	B	C	D
5-ILS 3	RA 140/14 150 DA 3830			

SA CATEGORY I ILS-SPECIAL AIRCREW & AIRCRAFT CERTIFICATION REQUIRED

GREAT FALLS, MONTANA  
Amdt 5C 17AUG17

47°29'N-111°22'W

GREAT FALLS INTL (GTF)  
**ILS RWY 3 (SA CAT I)**