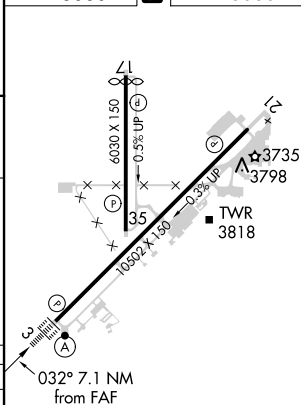


ILS or LOC RWY 3
GREAT FALLS INTL (GTF)

MISSED APPROACH: Climb to 5000 then climbing right turn to 8300 direct GTF VORTAC then on GTF VORTAC R-209 to FRYMN/I-SMR 16.9 DME and hold.

DME REQUIRED

ELEV 3680	D	TDZE 3680
-----------	----------	-----------



TDZ/CL Rwy 3
REIL Rwy 21
HIRL Rwy 3-21
MIRL Rwy 17-35

VGSI and ILS glidepath not coincident (VGSI Angle 3.00/TCH 70).

One Minute Holding Pattern

FRYMNM I-SMR 16.9

DCEEE I-SMR 9

Use I-SMR DME when on the localizer course.

*I-SMR 3.2

I-SMR 1.9

GS 3.00° TCH 54

CATEGORY	A	B	C	D
S-ILS 3		3880/18	200 (200-½)	
S- LOC 3	4140/24	460 (500-½)	4140/45	460 (500-¾)
C CIRCLING	4140-1	460 (500-1)	4320-1¾ 640 (700-1¾)	4420-2¼ 740 (800-2¼)

NW-1, 03 DEC 2020 to 31 DEC 2020

NW-1, 03 DEC 2020 to 31 DEC 2020