

APP CRS	Rwy Idg	10502
212°	TDZE	3669
	Apt Elev	3680

RNAV (RNP) Z RWY 21

GREAT FALLS INTL (GTF)

 -33°C

RF required. GPS required. For uncompensated Baro-VNAV systems, procedure NA below -24°C (-11°F) or above 49°C (121°F).

MISSED APPROACH: Climb to 8000 on track 212° to ZETNI, right turn to UPIGY and on track 271° to TUCKB and hold, continue climb-in-hold to 8000.

AT|S

126.6 269.0

GREAT FALLS APP CON

128.6 379.175

GREAT FALLS TOWER

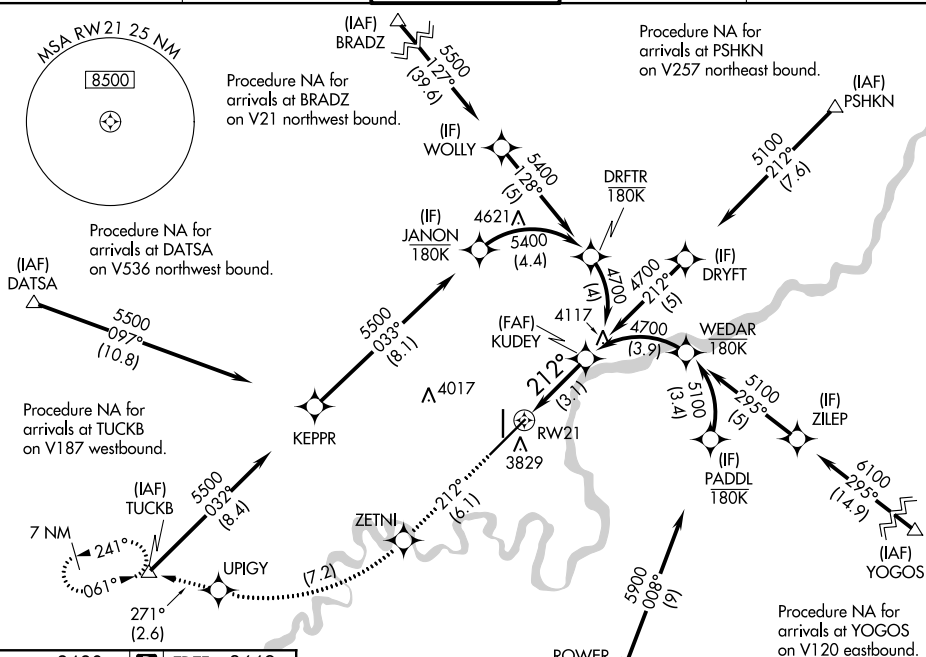
118.7 282.2

GND CON

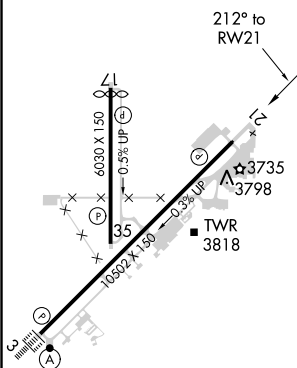
121.7 348.6

CLNC DEL

121.7 348.6







ELEV 3680	D	TDZE 3669
-----------	----------	-----------



Procedure NA for arrivals at URELE on V536 southbound

Δ⁴⁹⁴⁹

8000 ↑ tr 212°	ZETNI 		UPIGY 	tr 271°	TUCKB 
----------------------	--	---	--	------------	--

VGSI and RNAV glidepath not coincident
(VGSI Angle 3.00/TCH 75).

view for multiple IF locations.

GP 3.00°

GP 3.00°

TCH 59

CATEGORY	A	B	C	D
RNP 0.10 DA		3942/45	273 (300-7%)	
RNP 0.30 DA		3992/50	323 (400-1)	

AUTHORIZATION REQUIRED