

APP CRS	Rwy Idg	10502
032°	TDZE	3680
	Apt Elev	3680

RNAV (RNP) Z RWY 3

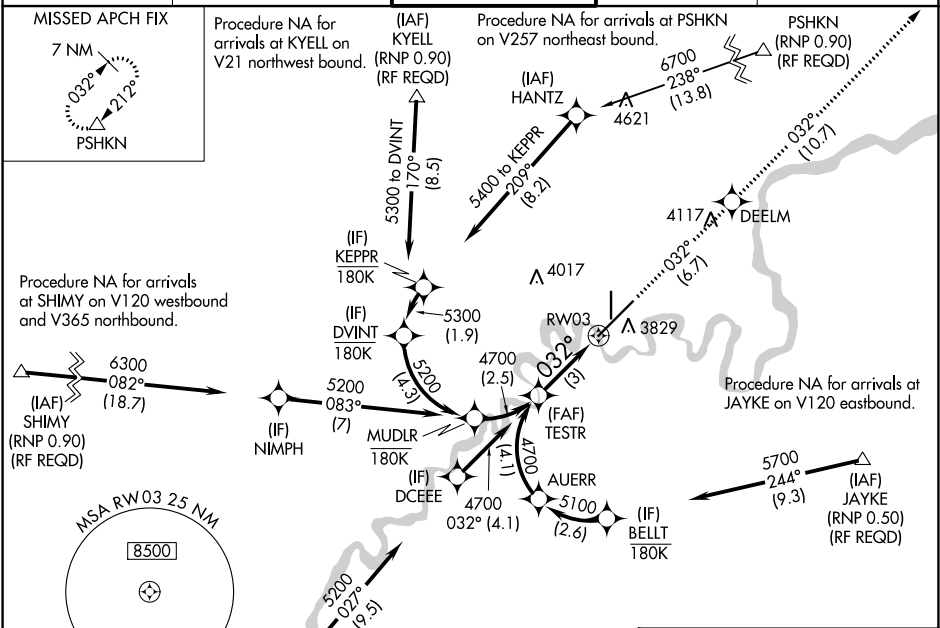
GREAT FALLS INTL (GTF')

GPS required. For uncompensated Baro-VNAV systems, procedure NA below -22°C (-8°F) or above 40°C (105°F). For inoperative ALS increase RNP 0.10 DA visibility all Cats to RVR 4500, increase RNP 0.30 DA visibility all Cats to RVR 6000.

ALSF-2

MISSED APPROACH: Climb to 6200 on track 032° to DEELM and on track 032° to PSHKN and hold.

ATIS 126.6 269.0	GREAT FALLS APP CON 128.6 379.175	GREAT FALLS TOWER 118.7 282.2	GND CON 121.7 348.6	CLNC DEL 121.7 348.6
----------------------------	---	---	-------------------------------	--------------------------------



See planview for multiple IF locations.

TESTR 4700
4700
GP 3.00° TCH 54
3 NM
RW03
VGS1 and RNAV glidepath not coincident (VGS1 Angle 3.00/TCH 70).

CATEGORY	A	B	C	D
RNP 0.10 DA		3973/24	293 (300-½)	
RNP 0.30 DA		4079/45	399 (400-¾)	

AUTHORIZATION REQUIRED

HIRL Rwy 3-21
MIRL Rwy 17-35
REIL Rwy 21
TDZ/CL Rwy 3

NW-1, 03 DEC 2020 to 31 DEC 2020

NW-1, 03 DEC 2020 to 31 DEC 2020