
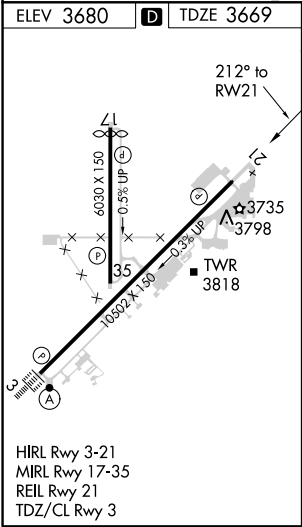
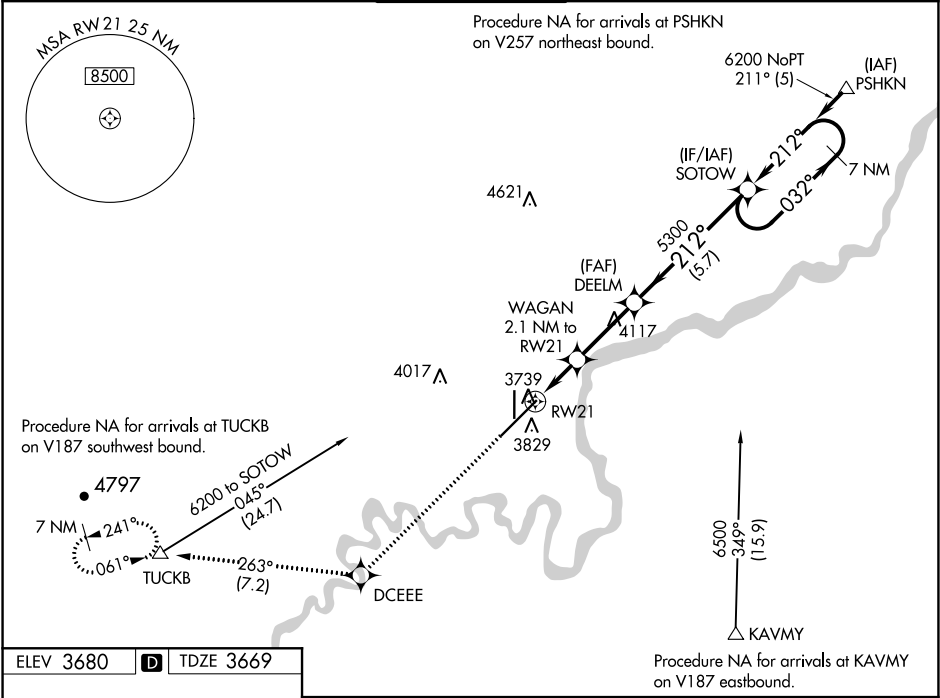


WAAS CH 90221 W21A	APP CRS 212°	Rwy Idg TDZE 3669 Apt Elev 3680
--	------------------------	---

RNAV (GPS) Y RWY 21
GREAT FALLS INTL (GTF')

 -33°C	For uncompensated Baro-VNAV systems, LNAV/VNAV NA below -24°C (-11°F) or above 49°C (121°F). DME/DME RNP-0.3 NA.	MISSED APPROACH: Climb to 8000 direct DCEEE and on track 263° to TUCKB and hold, continue climb-in-hold to 8000.
--	--	--

ATIS 126.6 269.0	GREAT FALLS APP CON 128.6 379.175	GREAT FALLS TOWER 118.7 282.2	GND CON 121.7 348.6	CLNC DEL 121.7 348.6
----------------------------	---	---	-------------------------------	--------------------------------



GREAT FALLS INTL (GTF')
RNAV (GPS) Y RWY 21

8000	DCEEE	tr 263°	TUCKB	VGSI and RNAV glidepath not coincident. (VGSI Angle 3.00/TCH 75).	
				SOTOW	7 NM Holding Pattern
*LNAV only.		WAGAN 2.1 NM to RW21	DEELM 5300	212°	032°
		*0.8 NM to RW21		5300	6200
		RW21	4380*		GP 3.00° TCH 59
		0.8	1.3 NM	2.9 NM	5.7 NM
CATEGORY	A	B	C	D	
LPV DA	3869/40		200 (200-¾)		
LNAV/VNAV DA	3927/45		258 (300-¾)		
LNAV MDA	4000/55	331 (400-1)	4000/50	331 (400-1)	
CIRCLING	4120-1 440 (500-1)	4140-1 460 (500-1)	4320-1¾ 640 (700-1¾)	4420-2¼ 740 (600-2¼)	

NW-1, 03 DEC 2020 to 31 DEC 2020

NW-1, 03 DEC 2020 to 31 DEC 2020