

LOC I-HLN	APP CRS	Rwy Idg	9000
110.1	267°	TDZE	3852
		Apt Elev	3877

ILS or LOC Y RWY 27

HELENA RGNL (HLN)

⚠

⚠

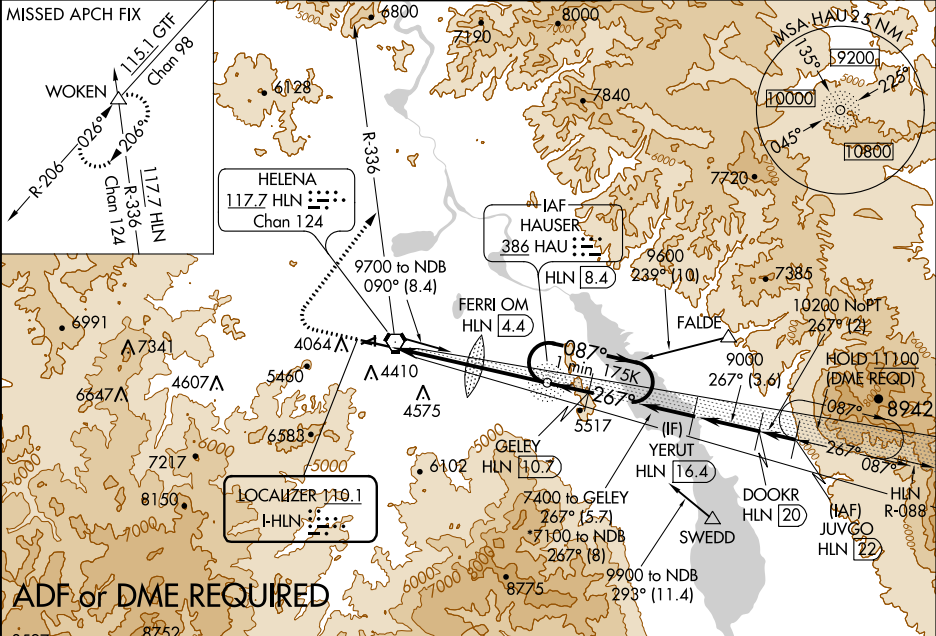
⚠

Inoperative table does not apply to S-LOC 27 all Cats. For inoperative MALSR, increase S-ILS 27 all Cats visibility to 1 7⁄8 miles, FERRI FIX minimums: S-LOC 27 Cat C, D and E visibility to 2 miles. Holding at HAU NDB authorized for Category A and B aircraft only. Circling NA south of Rwy 9-27 for Cats D and E. Circling to Rwy 5, 23, 35 NA at night. DME from HLN VORTAC, simultaneous reception of I-HLN and HLN DME required.

MALSR

MISSED APPROACH: Climb to 4700 then climbing right turn to 9000 via heading 021° and HLN VORTAC R-336 to WOKEN INT and hold, continue climb-in-hold to 9000.

ATIS	HELENA APP CON *	HELENA TOWER *	GND CON	UNICOM
120.4	119.5 229.4	118.3 (CTAF) 257.8	121.9	122.95



4700

9000

HLN

WOKEN

↑

hdg 021°

R-336

* LOC only

FERRI OM

HLN 4.4

HAU

NDB

HLN 8.4

GELEY

HLN 10.7

One Minute Holding Pattern

5427

5620*

7100*

7400

7400

087°

267°

087°

GS 3.00°

TCH 55

CATEGORY	A	B	C	D	E
S-ILS 27	4409-1 3⁄8 557 (600-1%)				
S-LOC 27	5620-1 1⁄4 1768 (1800-1 1⁄4)	5620-1 1⁄2 1768 (1800-1 1⁄2)	5620-3	1768 (1800-3)	
CIRCLING	5620-1 1⁄4 1743 (1800-1 1⁄4)	5620-1 1⁄2 1743 (1800-1 1⁄2)	5920-3	2043 (2100-3)	
FERRI FIX MINIMUMS*					
S-LOC 27	4580-1 1⁄2	728 (800-1 1⁄2)	4580-1 5⁄8	728 (800-1 1⁄2)	
CIRCLING	4640-1 763 (800-1)	4800-1 1⁄4 923 (1000-1 1⁄4)	5920-3	2043 (2100-3)	

ELEV 3877

D

TDZE 3852

3951

3984

1584 X 75

3951

3984

1584 X 75

267° 8.7 NM from FAF

REIL Rwy 9, 17 and 35

MIRL Rwy 5-23 and 17-35

HIRL Rwy 9-27

FAF to MAP 8.7 NM

Knots	60	90	120	150	180
Min:Sec	8:42	5:48	4:21	3:29	2:54