


APP CRS 267°	Rwy Idg 9000 TDZE 3852 Apt Elev 3877
------------------------	---

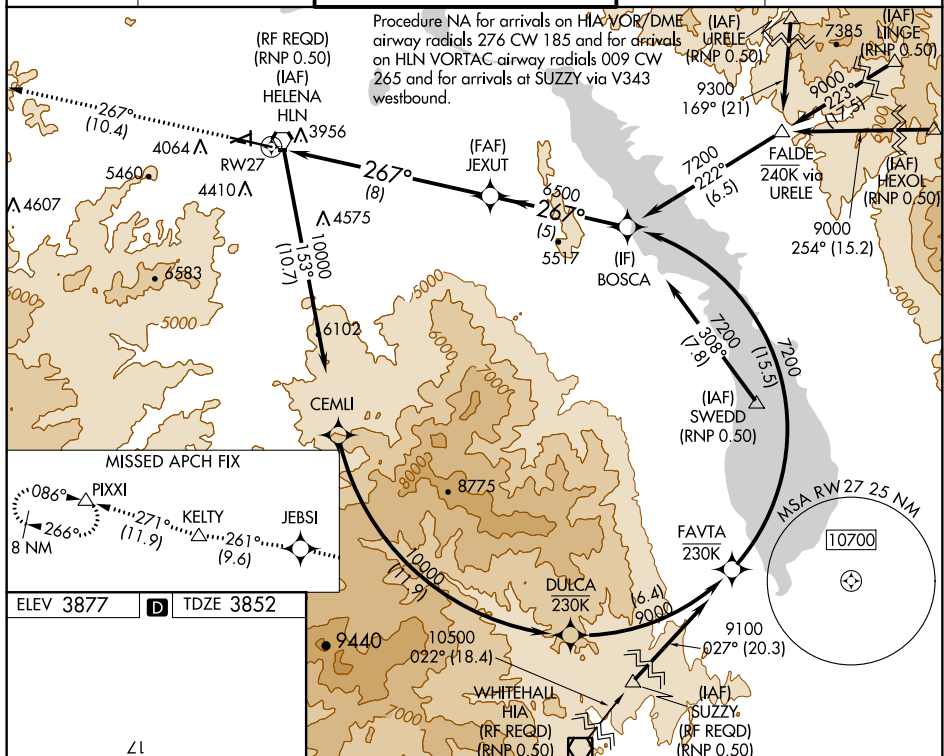
RNAV (RNP) Z RWY 27
HELENA RGNL (HLN)

 GPS required. For uncompensated Baro-VNAV systems, procedure NA below -22°C (-7°F) or above 41°C (105°F). *Missed approach requires minimum climb of 295 feet per NM to 7900. #Missed approach requires minimum climb of 290 feet per NM to 7300. †Missed approach requires minimum climb of 405 feet per NM to 6300. For inoperative MALSR, increase RNP 0.18* visibility to 1, RNP 0.22# visibility to 1¼, and RNP 0.30† visibility to 1½. Inoperative table does not apply to RNP 0.30.

MALS^R

MISSED APPROACH: Climb to 13000 via 267° track to JEBSI, and via 261° track to KELTY, and via 271° track to PIXXI and hold, continue climb-in-hold to 13000.

ATIS 120.4	HELENA APP CON ★ 119.5 229.4	HELENA TOWER ★ 118.3 (CTAF) 0 257.8	GND CON 121.9	UNICOM 122.95
---------------	---------------------------------	--	------------------	------------------



13000 ↑ 267° tr	JEBI ✦	261° tr	KELTY △	<p>JEXUT 6500 267° BOSCA 7200</p> <p>GP 3.00° TCH 55</p>				Procedure Turn NA
CATEGORY		A		B	C		D	
RNP 0.18 DA*				4119-1½	267 (300-½)			
RNP 0.22 DA#				4212-¾	360 (400-¾)			
RNP 0.30 DA†				4287-1	435 (500-1)			
RNP 0.30 DA				4863-4	1011 (1000-4)			
AUTHORIZATION REQUIRED								

REIL Rwy 9, 17 and 35 **L**
MIRL Rwy 5-23 and 17-35 **L**
HIRL Rwy 9-27 **L**

HELENA, MONTANA

Orig-B 30MAY13

46°36'N-111°59'W

HFIFNA RGNI (HLN)

RNAV (RNP) Z RWY 27

NW-1, 03 DEC 2020 to 31 DEC 2020

NW-1, 03 DEC 2020 to 31 DEC 2020