

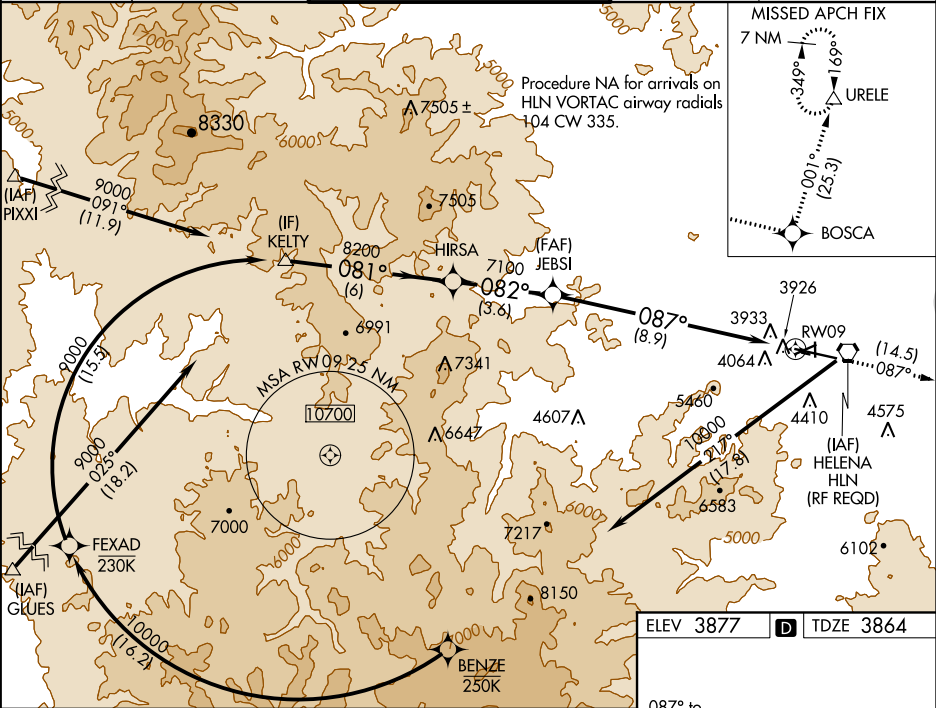
APP CRS	Rwy Idg	9000
087°	TDZE	3864
	Apt Elev	3877

RNAV (RNP) Z RWY 9
HELENA RGNL (HLN)

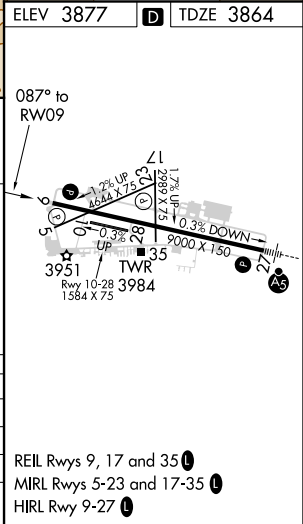
GPS required. For uncompensated Baro-VNAV systems, procedure NA below -22°C (-7°F) or above 54°C (130°F). When VGSi inoperative, procedure NA at night.
*Missed approach requires minimum climb of 260' per NM to 4300.

MISSED APPROACH: Climb to 12000 via 087° track to BOSCA and via 001° track to URELE and hold, continue climb-in-hold to 12000.

ATIS 120.4	HELENA APP CON* 119.5 229.4	HELENA TOWER* 118.3 (CTAF) 257.8	GND CON 121.9	UNICOM 122.95
---------------	--------------------------------	-------------------------------------	------------------	------------------



Procedure Turn NA	KELTY	HIRSA	JEB SI	RWY 9
GP 3.30° TCH 55	9000	8200	7100	
	081°	082°	087°	
	6 NM	3.6 NM	8.9 NM	
CATEGORY	A	B	C	D
RNP 0.11 DA*	4220-1	356 (400-1)		NA
RNP 0.17 DA	4258-1¼	394 (400-1¼)		NA
RNP 0.30 DA	4353-1½	489 (500-1½)		NA
AUTHORIZATION REQUIRED				



NW-1, 03 DEC 2020 to 31 DEC 2020

NW-1, 03 DEC 2020 to 31 DEC 2020