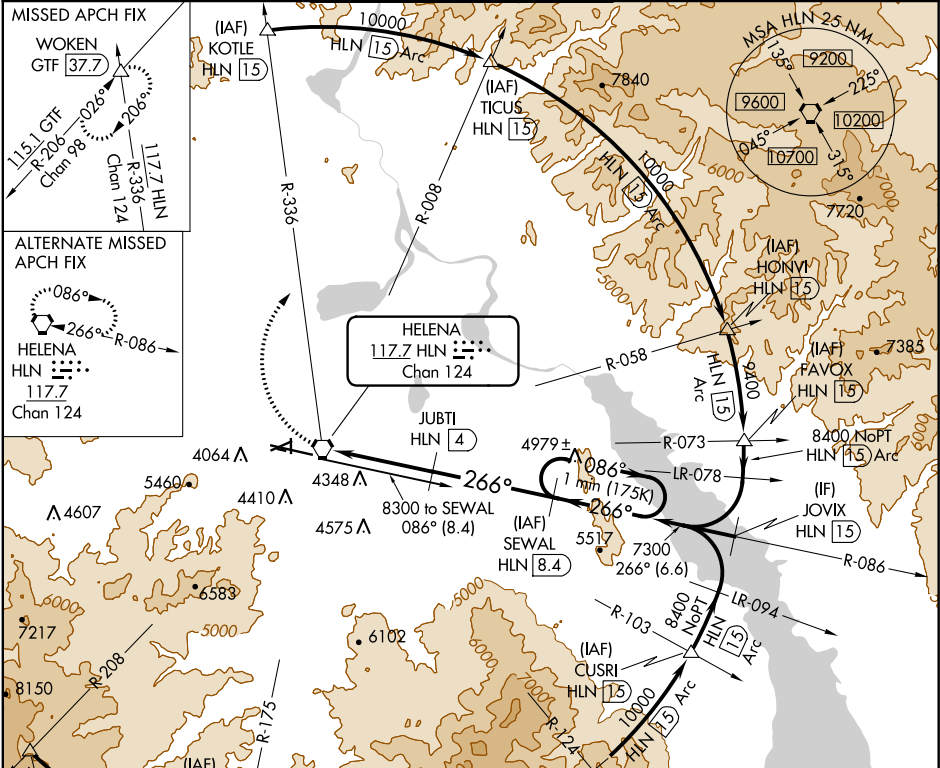


VORTAC HLN 117.7 Chan 124	APP CRS 266°	Rwy Idg TDZE Apt Elev 3877	N/A N/A 3877
---	------------------------	--	--------------------

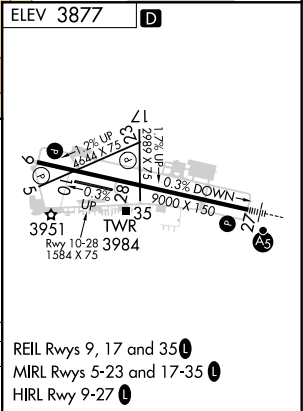
VOR/DME-B
HELENA RGNL (HLN)

<p>⚠ Circling NA for Cat D south of Rwy 9-27. DME Arc to final approach course required for turbojet aircraft. ⚠ -17°C Holding at SEWAL authorized for Cat A and B aircraft only.</p>	<p>MISSED APPROACH: Climbing right turn to 9000 on HLN VORTAC R-336 to WOKEN INT/GTF 37.7 DME and hold.</p>
---	---

ATIS 120.4	HELENA APP CON ★ 119.5 229.4	HELENA TOWER ★ 118.3 (CTAF) 0 257.8	GND CON 121.9	UNICOM 122.95
----------------------	--	---	-------------------------	-------------------------



	WOKEN HLN R-336	JUBTI HLN 4	SEWAL HLN 8.4	One Minute Holding Pattern
	HLN VORTAC			
	5420		7300	
	4 NM	4.4 NM		
CATEGORY	A	B	C	D
CIRCLING	4760-1¼ 883 (900-1¼)	4800-1¼ 923 (1000-1¼)	5920-3	2043 (2100-3)



NW-1, 03 DEC 2020 to 31 DEC 2020

NW-1, 03 DEC 2020 to 31 DEC 2020